

Classifying Latent User Attributes in Twitter

Delip Rao^{*}, David Yarowsky, Abhishek Shreevats, Manaswi Gupta
Department of Computer Science
Johns Hopkins University
3400 N. Charles Street
Baltimore, MD 21218
{delip, yarowsky, ashreev1, mgupta7}@cs.jhu.edu

ABSTRACT

Social media outlets such as Twitter have become an important forum for peer interaction. Thus the ability to classify latent user attributes, including gender, age, regional origin, and political orientation solely from Twitter user language or similar highly informal content has important applications in advertising, personalization, and recommendation. This paper includes a novel investigation of stacked-SVM-based classification algorithms over a rich set of original features, applied to classifying these four user attributes. It also includes extensive analysis of features and approaches that are effective and not effective in classifying user attributes in Twitter-style informal written genres as distinct from the other primarily spoken genres previously studied in the user-property classification literature. Our models, singly and in ensemble, significantly outperform baseline models in all cases. A detailed analysis of model components and features provides an often entertaining insight into distinctive language-usage variation across gender, age, regional origin and political orientation in modern informal communication.

Categories and Subject Descriptors

H.4 [Information Systems Applications]: Miscellaneous;
I.2.7 [Artificial Intelligence]: Natural Language Processing

1. INTRODUCTION

With the emergence of social media portals there is an abundance of user generated content on the Web. Further, the popularity of websites like Twitter, MySpace and Facebook is growing unabated. Twitter alone has over 10 million global users (8 million in the US) when compared to around 6 million for Facebook¹. The users and communities on these websites have an extensive reach to other users on these platforms. The top user of Twitter reaches around

3.2 percent of the total user base. This has important consequences in targeted advertising and personalization. However, unlike Facebook or MySpace, Twitter has limited meta-data available about its users. Important attributes of the user such as age and gender that are directly useful for providing personalized services are not typically available. Further, one might be interested in knowing other user attributes, such as ethnicity, opinions and other properties and preferences that the user might not disclose.

While there has been previous work on discovering latent speaker/author attributes from conversational genres, including telephone speech (e.g. Garera and Yarowsky [7]) and audio recordings (e.g. Bocklet et. al [1]), similar work on author-property discovery in microblogs such as Twitter is lacking in the literature, and the microblog genre has sufficient unique interesting properties to make investigation of this genre worthwhile. The goal of this paper is to automatically discover some of these *latent* (i.e. not-overtly-stated) attributes of the users using status messages (or ‘tweets’), the social network structure, and communication behavior of the users. We also explore additional latent user properties not previously predicted, as well as utilize novel features and algorithmic approaches not previously explored. Our first finding reveals that the status message content is more valuable in inferring latent author attributes relative to some properties of social network structure or communication behavior. This is in contrast to prior findings in telephone conversational speech where discourse factors have been proven more effective.

Since this a first-of-a-kind application of latent-author-attribute discovery to various author attributes on Twitter, we had to build our own annotated data for the attributes concerned. The details of the crawling and annotation methods, and a description of the attributes are provided in Section 2. We then treat this as a supervised classification problem, although semi-supervised variations are definitely possible and are a topic of our ongoing work. From the data, we derive tweet-content based models in two ways – 1) using lexical-feature-based approaches and 2) by extracting and utilizing sociolinguistics-inspired features. Previous work by Garera and Yarowsky [7] showed the importance of sociolinguistic models in classifying latent speaker attributes in conversational speech transcripts. Here we show the effectiveness of these and additional novel features for microblogs. It should be noted that the sociolinguistic features used in [7] are different from the ones utilized here given the substantial genre,

^{*}Corresponding author

¹<http://www.allfacebook.com/2009/03/twitter-facebook-comparison/>

medium and style differences and constraints of the Twitter data relative to conversational speech. Details of the sociolinguistic features we employ, along with our other model descriptions, are provided in Section 4. Our results, presented in Section 5, show significant accuracy gains relative to the baseline model on all attributes investigated, and on data that is inherently noisy.

2. DESCRIPTION OF DATA AND LATENT ATTRIBUTES

We investigate and evaluate performance on three biographic author attributes – gender, age, and regional origin – and one personalization attribute – political orientation. This is limited only by our current access to ground-truth data for evaluation, and using the same approach described in this paper one can learn a diverse variety of other attributes including dietary preferences (vegetarian vs. non-vegetarian), sexual orientation (homosexual vs. heterosexual), student status (student vs. non-student) and so on constrained only by available training and evaluation data.

For each of these tasks we built a dataset by focused crawling and manual annotation. For each attribute a ‘seed’ set of related users is collected and from these seeds other potential candidates are explored in a breadth-first manner via the Twitter follower network². We further ignore all candidates with a high follower count as these tend to celebrities or organizations. Each of the remaining candidates were manually annotated by two independent annotators. The annotators were not exposed to the experimental methods used or the modeling approaches adopted. To avoid a label bias problem we constrained the number of users in each class to be similar. We describe the crawling approaches and the sources used for each of the attributes in detail. All of the manually-annotated Twitter data sets developed in this work will be made available as a new shared resource to the research community.

2.1 Gender

The task here is to detect if a Twitter user is male or female simply by the content and behavior of their postings. While many Twitter users use their real name, which can reveal their gender, many choose names such as *graywolf* or *jellyfish* that do not convey gender. To make this work maximally general to all Twitter users, and to informal communication without associated gender-marked user handles, we ignore user names in this classification. Instead we are interested in knowing if male and female Twitter users can be distinguished exclusively from the content and style of their writing.

For gender, the seed set for the crawl came from initial sources including sororities, fraternities, and male and female hygiene products. This produced around 500 users in each class.

2.2 Age

While age is a real valued attribute, given the general lack of ground truth for user age, in this paper we employed a labor-intensive manual investigation and classification of

users into two major demographic pools, users who are below 30 and users who are above 30. This binary categorization is nevertheless useful for user modeling and understanding. Age is also a difficult attribute to learn. Not only does it change constantly, age-sensitive communication behavior differs based on numerous socioeconomic variables, and there is no well known indicator for age on Twitter.

The crawls for age categories were seeded by looking for twitter lists for initial seed topics including “baby boomers”, “young moms” or searches for terms such as “junior” or “freshman” in the user description field. This seed set was expanded by adding all the followers and crawling their profiles. The ground-truth labels for evaluation were then derived by manually looking up the MySpace, LinkedIn profiles, blogs, and/or homepages that many of these users had listed along with their Twitter profile. This yielded around 1000 users in each class.

2.3 Regional Origin

The regional origin of a user often correlates with a user’s dialect, such as whether they are from the South or North-East Urban USA. There has also been interest in classifying speakers of English by their national origin. We combine these into the refined task of classifying whether someone writing in English from India is from Southern or Northern India.

In order to highlight English dialectal differences, an initial seed list of of posts from 3 south and 3 north Indian cities was compiled focusing on cities with relatively low rates of migration (unlike Bangalore or Mumbai) to minimize noise in the data, just as one would exclude Atlanta when developing training data for Southern US dialect. A Twitter search on these cities were used to harvest an initial candidate set of users. The candidate set was further expanded by adding the followers of the users. Finally, the profiles of all these candidates were manually annotated as north or south Indian by two native Indian-language-speaking annotators. This yielded around 200 users per category. We also explored the possibility of using the Twitter GeoLocation API with little success in coverage, possibly due to the low proliferation of GPS enabled mobile devices in India and our intentional exclusion of the large metropolitan cities.

2.4 Political Orientation

We investigated Twitter users from the US and tried to distinguish between users with Republican/conservative leanings vs. those with typically Liberal/Left/Democratic leanings. Our seed set for this crawl was populated by looking at twitter lists for the National Rifle Association (NRA), groups like “Expose Liberals”, keyword searches like “support Palin” or “proud democrat” and hashtags related to current news events – eg. [#ISupportArizona](#) for the Arizona Anti-Immigration Law and then iterating. Finally each of the derived candidates was carefully examined by looking into the collected tweet messages and manually the user as the prototypical label “Democrat” or “Republican” as shorthand based on the observed positions. This yielded around 500 users per category. Our goal is to discover if a computer can make this classification automatically.

Overall details regarding the data we collected and anno-

²We used the Twitter4J Java API.

tated are shown in Table 1. In each case, we assumed that a user’s Gender, Age, Political Orientation and Regional Origin are stable (e.g. have a single value across all the collected tweets from the user).

Attribute	#users per class	no. of tweets
Gender	500	405151
Age	1000	2367631
Political	200	1986392
Regional Origin	500	497337

Table 1: Properties of the utilized annotated corpus

3. NETWORK STRUCTURE AND COMMUNICATION BEHAVIOR

As an initial investigation of potential features for classification, we studied the network structure and communication behavior of individuals conditioned on the classes described in Section 2.

3.1 Network Structure

For each of the classes we studied if there was any difference in the distribution of:

1. *The follower-following ratio:* The ratio of number of followers of an user to the number of users he/she is following.
2. *The follower frequency:* The number of followers
3. *The following frequency:* The number of followees

These scores were normalized for the entire corpus. Contrary to prior expectations that these features would correlate to some degree with gender and age, we were surprised to discover no exploitable difference in these network-structure-based features on the attributes studied. Figures 1, 2, and 3 illustrate the remarkably similar observed distributions based on gender, and we observed similar effects for other attributes³.

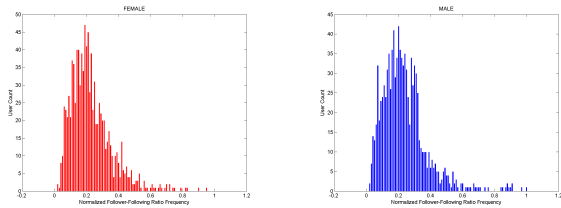


Figure 1: Normalized follower-following ratio for male and female users

3.2 Communication Behavior

Motivated by the traditional research in the discourse behavior of communicants, we studied communication behavior of Twitter users by observing:

³While the scale of these figures make it impossible to read the axis dimensions without zooming in PDF, our primary goal is to illustrate the similarity of the observed distributions without consuming excessive space in the paper.

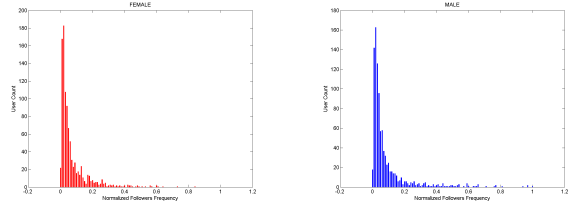


Figure 2: Normalized followers frequency for male and female users

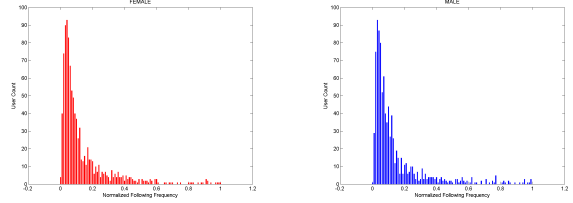


Figure 3: Normalized following frequency for male and female users

1. *Response frequency:* percentage of tweets from the user that are replies
2. *Retweet frequency:* percentage of tweets that are retweets.
3. *Tweet frequency:* percentage of tweets that are from the user, uninitiated.

Again, we observed no exploitable difference in the communication behavior on these dimensions by male and female users, as illustrated in figures 4, 5, and 6. This is in contrast to findings in conversational speech genres [7] where analogous conversational properties in spoken genre were highly productive. Similarly, we observed no exploitable differences in these measures for classifying age, regional origin, and political orientation. While nominally a negative result, we decided to publish the findings of Section 3 given that the experimental results are in striking contrast to common intuition, and to productively inform others seeking to pursue similar tasks.

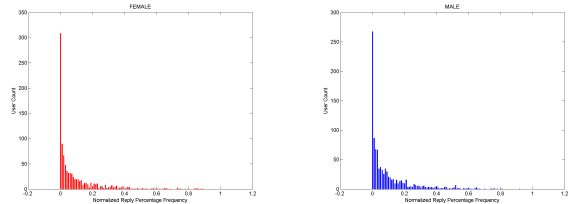


Figure 4: Normalized response frequency in male and female users

4. CLASSIFICATION MODELS

For the purpose of these experiments, we generalized the four user-property classification tasks as binary classification problems, and built separate binary classifiers for each

<i>FEATURE</i>	<i>Description/Example</i>
SIMLEYS	A list of emoticons compiled from the Wikipedia.
OMG	Abbreviation for ‘Oh My God’
ELLIPSES	‘...’
POSSESSIVE BIGRAMS	E.g. my_XXX, our_XXX
REPATED ALPHABETS	E.g. niceeeee, noooo waaaay
SELF	E.g., Lxxx, Im_xxx
LAUGH	E.g. LOL, ROTFL, LMFAO, haha, hehe
SHOUT	Text in ALLCAPS
EXASPERATION	E.g. Ugh, mmmm, hmmm, ahh, grrr
AGREEMENT	E.g. yea, yeah, ohya
HONORIFICS	E.g. dude, man, bro, sir
AFFECTION	E.g. xoxo
EXCITEMENT	A string of exclamation symbols (!!!!!)
SINGLE EXCLAIM	A single exclamation at the end of the tweet
PUZZLED PUNCT	A combination of any number of ? and ! (!?!?!?)

Table 2: List of Socio-Linguistic features

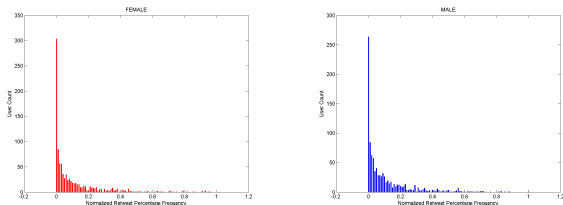


Figure 5: Normalized retweet frequency in male and female users

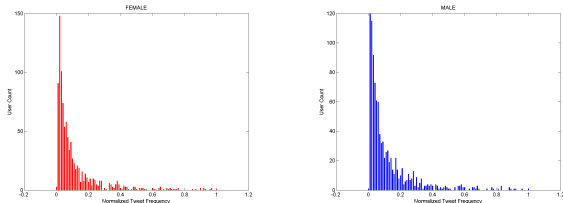


Figure 6: Normalized tweet frequency in male and female users

attribute using Support Vector Machines (SVM) [9]. The features for these classifiers depend on the models being used but all features are derived from the tweet messages alone as our goal was to study the efficacy of language content processing in identification of latent user attributes from observed textual communications. Below we describe three classification models: 1) Sociolinguistic-feature models, 2) Ngram-feature models, and 3) a stacked model that combines the results from the previous two models.

4.1 SocioLinguistic-feature Models

Research in sociolinguistics (see Macaulay [11]) has demonstrated the differences in lexical choice and other linguistic features in discourse conditioned on age, gender, and social class. For example, in speech it is well known that certain utterances like “umm”, “uh-huh”, and back channel responses

like laughter and lip smacking are more prevalent among female speakers than their male counterparts. Mean utterance length and conversational dominance have also been productively employed features.

The absence of prosodic cues in Twitter, the fixed utterance size limitations, and nature of tweeting vs. speech conversation demands that the traditional sociolinguistic cues be re-examined for this genre. We found communication on Twitter and other online media provides valuable sociolinguistic cues that help identify latent attributes. However, the nature of the cues are different. For instance, a very peculiar cue is the presence of a sequence of exclamation marks, which empirically is very indicative of a female user in our dataset. Also we found the presence of certain kinds of emoticons (like <3) is also a strong indicator of female users. People laugh differently on Twitter as well. While women LOL, men tend to LMFAO. These cues are not necessarily restricted to gender. For example, the lexical choices can certainly distinguish between young and old users. The use of address terms like ‘dude’ and ‘bro’ almost certainly indicate a younger user. Similarly, we found the older users more articulate, i.e. they use meaningful sentences within character limits as opposed to the more inarticulate choice of using ellipses (...) among many younger users. A complete listing of socio-linguistic features extracted is shown in Table 2. These features are extracted from status messages. Ideally one would derive (or learn) sociolinguistic cues on a per-attribute basis, but for model generality we utilized and evaluated the same set of sociolinguistic features for all user attributes.

The templates from Table 2 resulted in 3774 unique instantiated feature types. The extracted features were used to learn an SVM based binary classifier; we call this model *socling*. All features are uniformly weighted but the presence of a feature multiple times in a user’s tweet stream is accounted for in the real-valued count features. We employed the SVMlite package⁴. Examples and discussion of some instantiated features and their model statistics follow in Section 5.

⁴<http://svmlight.joachims.org/>

4.2 Ngram-feature Model

Boulis and Ostendorf [2] first proposed the use of SVM-based models for identification of gender from telephone conversations. Garera and Yarowsky [7] further showed the utility of these models in a wider range of conversational data. We thus utilized this as one class of approaches for Twitter classification by deriving the unigrams and bigrams of the tweet text. The text is first segmented and normalized to preserve emoticons and other punctuation sequences as first-class lexical items (they are traditionally deleted). Emoticons serve as important features as explained earlier. Digits are normalized and text lowercased. The unigrams and bigrams thus generated are weighted by their normalized term frequency – we found TFIDF did worse for this task on a development set. Feature vector dimensions and other statistics for the various attributes are listed in Table 3. This feature set is used to build another set of SVM-based classification models.

Attribute	Feature dimension
Gender	1256558
Age	4908979
Political	4398829
Regional Origin	1752420

Table 3: Feature dimensions for the ngram models

4.3 Stacked Model

Finally, we employed a stacked model to do simple classifier stacking. We utilized another SVM for this task, but its features are the predictions from the Ngram-feature and SocioLinguistic models along with their prediction weights.

5. EVALUATION

We evaluate the different models described above by dividing each dataset into training, development, and test sets. The development set was used to set the parameters of the SVM including the choice of kernel. Our experiments did not find other kernels to perform any better than the linear kernel for all classification tasks here. By design, we kept the number of examples in each class to be same. So an uninformative prior (chance) would yield only 50% accuracy. We now discuss the performance for each of the attributes in detail.

5.1 Gender

The results for gender prediction are shown in Table 4. The sociolinguistic model performs better than the lexical ngram model from the status text alone. This indicates the effectiveness of the sociolinguistic features listed in Table 2. Further the stacked model gives a slight improvement over the *socling* model.

Model	Accuracy
socling	71.76
ngram	68.70
stacked	72.33
prior	50.00

Table 4: Results for GENDER (Male vs. Female)

Some interesting findings from the sociolinguistic model for gender follow. For all experiments we only considered messages that were either broadcasts or replies and ignored the ‘retweet’ (RT) messages since the authorship of this text cannot be attributed to the user.

Feature	#female/#male
Emoticons	3.5
Elipses	1.5
Character repetition	1.4
Repeated exclamation	2.0
Puzzled punctuation	1.8
OMG	4.0

Table 5: Sociolinguistic-based features for GENDER expressed as relative frequency of females and males.

Emoticons

Emoticons are key ‘non-verbal’ cues in informal communication. We found that female users were 3.5 times more likely to use emoticons than their male counterparts. This is in line with the findings in speech research where laughter in conversational speech is more frequently associated with a female speaker. Men and women also differ in the kind of emoticons used. While both men and women like to smile (:)), women are likely to use emoticons like heart (<3) and men tend to grin (:D) and wink (;)).

Ellipses

Ellipses are a sequence of three or more periods used to indicate a pause or an unfinished thought or as a rhetorical device – aposiopesis. We found women use ellipses 1.5 times more than men.

Alphabetic Character Repetition

Alphabetic character repetition refers to the ‘pumping’ of identical characters in sequence in informal communication to emphasize or to transcribe a prosodic effect. Some examples of character repetition from our corpus include **niceeeee**, **gawwwd**, and **noooo waaaay**. We found that female users in our corpus employ such character repetition 1.4 times more often than male users.

Excitement

While measure of excitement in speech is easier and more varied due to intonation and other prosodic features, in a size-constrained Twitter message there are limited ways for users to express excitement:

- *Repeated Exclamation*: A string of !’s. We found women were more than twice likely to repeat exclamation than men.
- *Puzzled Punctuation*: A combination of any number ! and ? in any order. Women tended to have puzzled comments 1.8 times more than men.
- *OMG*: This refers to the abbreviation of the common slang expression ‘oh my god’. Women were 4 times likely to use this expression than men and a sequence of OMGs exclusively identifies a female user.

It should be noted that gender differences in the usage of some of these features are also conditioned on the age of the users. We did not provide any explicit instruction to our annotators to balance different age groups and our focused crawling setup for gender managed to get a large proportion of younger users.

Possesives

We observed that the words following “my” have particularly high value as predictive features for biographic attributes because they distinguish properties of the individual (e.g. “my wife”, “my dress”, “my gf”) from those of other individuals (e.g. “your wife”, “his wife”). And while all of these variant bigrams are included in the ngram model, we observe empirically that performance is improved when the *socling* model is augmented to include the instantiated template *my* followed by any word to provide special status to these self-referential features. Table 6. lists a few top and bottom possessives for men and women (excluding most profanities and obscene bodypart references, which are not in short supply).

Male		Female	
my_zipper	1	my_zzz	1
my_wife	0.96	my_yogurt	1
my_gf	0.96	my_yoga	1
my_nigga	0.91	my_husband	0.98
my_want	0.83	my_bf	0.97
my_beer	0.78	my_prof	0.95
my_shorts	0.67	my_daddy	0.94
my_jeep	0.6	my_research	0.93
my_woman	0.5	my_gosh	0.92
my_vegas	0.5	my_bff	0.88
my_lovely	-11.67	my_buddy	-3.33
my_gosh	-11.75	my_lady	-3.83
my_eyebrows	-13	my_motto	-4
my_outfit	-17	my_chick	-4.5
my_diet	-17	my_band	-5.67
my_bf	-35	my_nig	-10
my_hubby	-36	my_mans	-11
my_nails	-41	my_generation	-13.5
my_girls	-42	my_gf	-25
my_husband	-44.33	my_wife	-25.46

Table 6: Possessive features for male and female users

Disfluencies and Agreement

We also noticed a higher ratio of disfluencies (oh, hmm, ugh ..) and lower ratio of agreement expressions (yeah, yea, ...) between female and male users as illustrated in Table 7.

5.2 Age

Table 8 shows model performance for user Age classification. In this case, the ngram model performs better than the sociolinguistic model and the stacked model improves over both.

The reason for the relatively poor performance of the sociolinguistic features for age compared to the status-ngram-based models is because we did not observe major differences

Disfluency/Agreement	#female/#male
oh	2.3
ah	2.1
hmm	1.6
ugh	1.6
grrr	1.3
yeah, yea, ...	0.8

Table 7: Disfluency or agreement feature as observed in males and females

Model	Accuracy
socling	69.44
ngram	73.09
stacked	74.11
prior	50.00

Table 8: Results for AGE (Above30 vs. Below30)

in informal writing styles of older and younger users in Twitter (The age corpus was also balanced for gender, and much older users are typically not on twitter at all.) For instance, the use of emoticons was almost identical. But alphabetic character repetition was 30% more likely in younger twitter users. This suggests further investigation in attribute specific sociolinguistic cues.

Above 30		Below 30	
my_zzzzzzz	1	my_zunehd	1
my_work	1	my_yuppie	1
my_epidural	1	my_sorors	0.94
my_daughters	0.98	my_rents	0.93
my_grandkids	0.95	my_classes	0.90
my_retirement	0.92	my_xbox	0.87
my_hubbys	0.91	my_greek	0.79
my_workouts	0.9	my_biceps	0.75
my_teenage	0.88	my_homies	0.70
my_inlaws	0.86	my_uniform	0.56
my_bestfriend	-17	my_memoir	-21
my_internship	-18.17	my_daughter	-24.70
my_dorm	-18.75	my_youngest	-24.71
my_cuzzo	-19	my_tribe	-29
my_bby	-26	my_nelson	-36
my_boi	-30	my_oldest	-39
my_dudes	-34	my_2yo	-39
my_roomate	-37	my_kiddos	-45
my_formspring	-42	my_daughters	-56
my_hw	-51	my_prayer	-62

Table 9: Possessive features for above 30 and below 30 users

Example possessive features are listed in Table 9. However, possessives are also included in the status-ngram-based model, just without special status, minimizing the impact of the difference.

5.3 Regional Origin

The Regional Origin of a user is the hardest attribute to learn. In fuller generality, it’s an open class attribute and

often gets complicated due to mixed origins and nurture vs. environmental effects on dialect and usage. Our setup was to identify the regional origin of Indian English-writing authors based on their dialectical differences in English tweets. Our experiments (see Table 10) shows the effectiveness of the sociolinguistic-feature models over ngram-based models.

<i>Model</i>	<i>Accuracy</i>
socling	77.08
ngram	72.92
stacked	73.77
prior	50.00

Table 10: Results for ORIGIN (South vs. North India)

In order to determine if region-specific name or location usage (e.g. common locations and given/surnames of the region) rather than strictly language usage/style was affecting performance, we further filtered out people and place proper names, using a gazetteer and namelist, from the tweet messages to see to what extent the ngram-feature model relied on those proper-name features (capitalization was insufficient by itself given the frequently all-lower-case text in Twitter). We did not measure any significant changes to the result presented in Table 10, which shows that these results are driven primarily by style and common noun/verb lexical usage variations rather than region-specific names.

Our general set of sociolinguistic features listed in Table 2 seemed to discriminate well between the north and south Indian users. For some unknown reason, north Indian users tended to use emoticons, repeat characters, show excitement (repeated exclamation, puzzled punctuation) more than south Indian users. Our annotators were instructed to balance male and female users in this data.

5.4 Political orientation

The last attribute we considered is the personalization or user-preference attribute of political orientation. This attribute is of course not formally intrinsic to the user and could change over time (although it rarely does in short time windows). Nevertheless, learning user preferences has important consequences in recommendation and targeted advertising. Learning political orientation from congressional debate texts has been explored earlier, as in Thomas et al [14]. However doing so on microblogging environments is challenging due to limited availability of text, and unlike congressional debates, user twitter streams are topically heterogeneous and discuss political topics very sporadically, if at all. However the presence of other benign indicators might reveal the users true intentions or affiliations. In our corpus we’ve noticed that even if the user did not discuss politics explicitly the presence of possessive’s such as “my_tofurkey” strongly indicated democrat while “my_handgun” almost always indicated republican.

The generic sociolinguistic features fared poorly compared to the model derived from status ngrams.

As a small illustration of the utility of learning political orientation we show how the cable television viewership is distributed among democrats and republicans in our corpus.

<i>Model</i>	<i>Accuracy</i>
socling	63.37
ngram	82.84
stacked	80.19
prior	50.00

Table 11: Results for POLITICAL (Reps vs. Dems)

Table 12 was derived by extracting the possessives my_XXX where XXX was a television network (e.g. “My CNN post”). These results are in agreement with the general understanding about the viewership of these channels.

<i>TV Network</i>	<i>Democrats</i>	<i>Republicans</i>
MSNBC	0.25	-0.33
CNN	0.5	-1
NBC	0.67	-2
Fox	-1	0.5
Logo	0.67	-2

Table 12: Television network viewership conditioned on political orientation

Product preferences could also be learned in a similar fashion. For example, in our corpus we found that democrats favored Android phones over the Blackberries preferred by republicans.

Democrat		Republican	
my_youthful	1	my_zionist	1
my_yoga	1	my_yuengling	1
my_vegetarianism	1	my_weapons	1
my_upscale	1	my_walmart	1
my_tofurkey	1	my_trucker	1
my_synagogue	1	my_patroit	1
my_lakers	0.93	my_lsu	1
my_gays	0.8	my_blackeberry	1
my_feminist	0.67	my_redneck	0.89
my_sushi	0.6	my_marine	0.82
my_marathon	-10	my_partner	-0.29
my_trailer	-11	my_atheism	-1
my_liberty	-11.5	my_sushi	-1.5
my_information	-12.5	my_netflix	-2.2
my_teleprompter	-13	my_passport	-2.43
my_warrior	-14	my_manager	-3.67
my_property	-19	my_bicycle	-4
my_lines	-19	my_android	-6
my_guns	-19.67	my_medicare	-14
my_bishop	-33	my_nigga	-17

Table 13: Possessive features for Democrat and Republican users

6. RELATED WORK

Research in sociolinguistics has explored the effects of gender, age, social class, religion, education and other speaker attributes in conversational discourse and monologue. Earliest work in this area by Fischer [6] and Labov [10] involved

studying morphological and phonological features respectively. Of all the attributes, gender has been extensively studied presumably because of its anthropological implications (see Coates [4] and Eckert and McConnell-Ginet [5]).

Early computational models for detecting gender from text were primarily interested in formal text (E.g., Singh [13] and Herring and Paolillo [8]) although standard-prose blogs were considered in later works (Burger and Henderson [3]; Nowson and Oberlander [12]).

Recent state-of-the-art work in this oeuvre is by Garera and Yarowsky [7], who extend the ngram based models proposed in Boulis and Ostendorf [2] with sociolinguistic features and show applicability to a variety spoken conversational transcripts and more formal enron email.

The automatic classification of diverse user attributes from highly informal microblog postings on the other hand has been essentially unexplored, however, and unlike conversational speech offer several challenges:

1. *Limited size*: Unlike blogs, emails, and conversational transcripts, Twitter messages are extremely sparse and short due to the size limitations imposed by Twitter.
2. *Informal nature*: In the spectrum of formal/informal writing Twitter messages fall towards the far end of informal communication.
3. *Lack of prosodic cues*: Prosodic cues in conversational speech that are extremely useful in learning speaker attributes are essentially missing in Twitter. While this characteristic is shared by email and blogs, compounded with the short amount of text can make Twitter a challenging dataset.
4. *Departure from traditional sociolinguistic cues*: Twitter is newer communication genre and due to the reasons listed above traditional sociolinguistic cues don't seem hold as clearly. Our work also found that certain kinds of communication behavior on Twitter failed to discriminate between gender these can be particularly powerful indicators in telephone speech transcripts.

However, the benefits of detecting latent attributes of users on a growing platform like Twitter with a wide reach is immense in business and government endeavors. Our work is the first multi-attribute report of performance on this new genre.

7. CONCLUSIONS

This paper has presented a novel set of features and approaches for automatically classifying latent user attributes including gender, age, regional origin, and political orientation solely from the user language of informal communication such as Twitter. Success in this enterprise has important applications in advertising, personalization, and recommendation. The paper has included a novel investigation of stacked-SVM-based classification algorithms over a rich set of original features, applied to classifying these four user attributes. It also includes extensive analysis of features and

approaches that are effective and not effective in classifying user attributes in Twitter-style informal written genres as distinct from the other primarily spoken genres previously studied in the user-property classification literature. Our models, singly and in ensemble, significantly outperform baseline models in all cases. A detailed analysis of model components and features provides an often entertaining insight into distinctive language-usage variation across gender, age, regional origin and political orientation in modern informal communication.

8. REFERENCES

- [1] T. Bocklet, A. Maier, and E. Nöth. Age determination of children in preschool and primary school age with gmm-based supervectors and support vector machines/regression. In *TSD '08: Proceedings of the 11th international conference on Text, Speech and Dialogue*, pages 253–260, Berlin, Heidelberg, 2008. Springer-Verlag.
- [2] C. Boulis and M. Ostendorf. A quantitative analysis of lexical differences between genders in telephone conversations. In *ACL '05: Proceedings of the 43rd Annual Meeting on Association for Computational Linguistics*, pages 435–442, Morristown, NJ, USA, 2005. Association for Computational Linguistics.
- [3] J. Burger and J. Henderson. An exploration of observable features related to blogger age. In *Computational Approaches to Analyzing Weblogs: Papers from the 2006 AAAI Spring Symposium*, 2006.
- [4] J. Coates. *Language and Gender: A Reader*. Blackwell Publishers, 1998.
- [5] P. Eckert and S. McConnell-Ginet. *Language and Gender*. Cambridge University Press, 2003.
- [6] J. Fischer. Social influences on the choice of a linguistic variant. In *Proceedings of Word*, 1958.
- [7] N. Garera and D. Yarowsky. Modeling latent biographic attributes in conversational genres. In *Proceedings of the Joint Conference of Association of Computational Linguistics and International Joint Conference on Natural Language Processing (ACL-IJCNLP)*, pages 710–718, 2009.
- [8] S. Herring and J. Paolillo. Gender and genre variation in weblogs. In *Journal of Sociolinguistics*, 2006.
- [9] T. Joachims. *Learning to Classify Text using Support Vector Machines*. Kluwer, 2002.
- [10] W. Labov. *The Social Stratification of English in New York City*. Center for Applied Linguistics, Washington DC, 1966.
- [11] R. K. Macaulay. *Talk that counts: Age, Gender, and Social Class Differences in Discourse*. Oxford University Press, 2005.
- [12] S. Nowson and J. Oberlander. The identity of bloggers: Openness and gender in personal weblogs. In *Computational Approaches to Analyzing Weblogs: Papers from the 2006 AAAI Spring Symposium*, 2006.
- [13] S. Singh. A pilot study on gender differences in conversational speech on lexical richness measures. In *Literary and Linguistic Computing*, 2001.
- [14] M. Thomas, B. Pang, and L. Lee. Get out the vote: determining support or opposition from congressional floor-debate transcripts. In *EMNLP '06*, 2006.