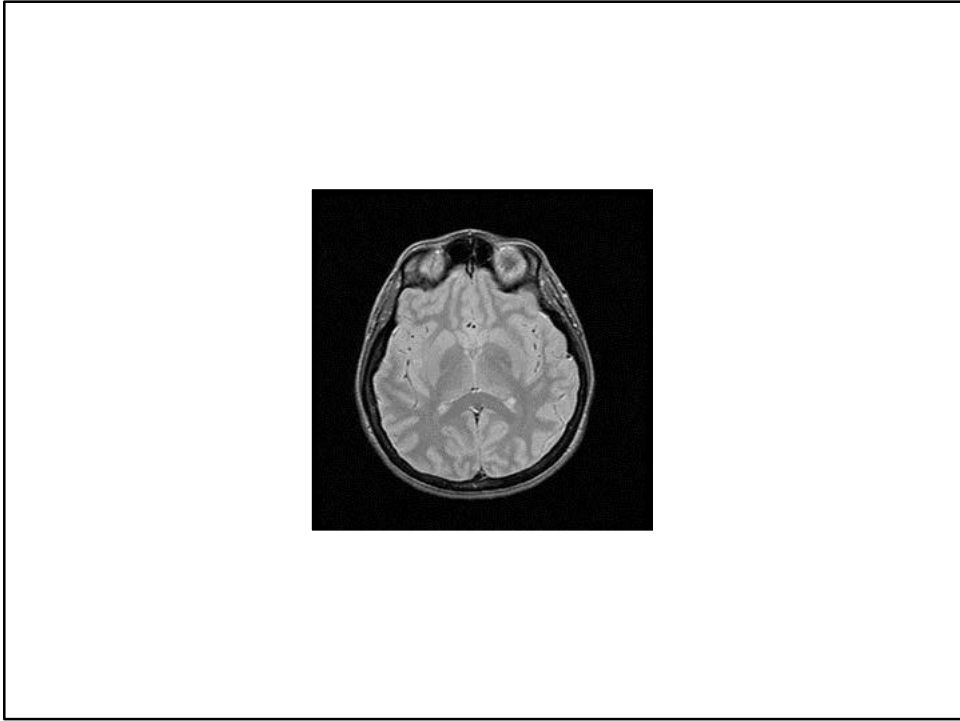


Assembly diagram of a 1.5 T cryostat vessel (Toshiba)

View of a 1.5 T diagnostic MRI magnet (GE Medical)

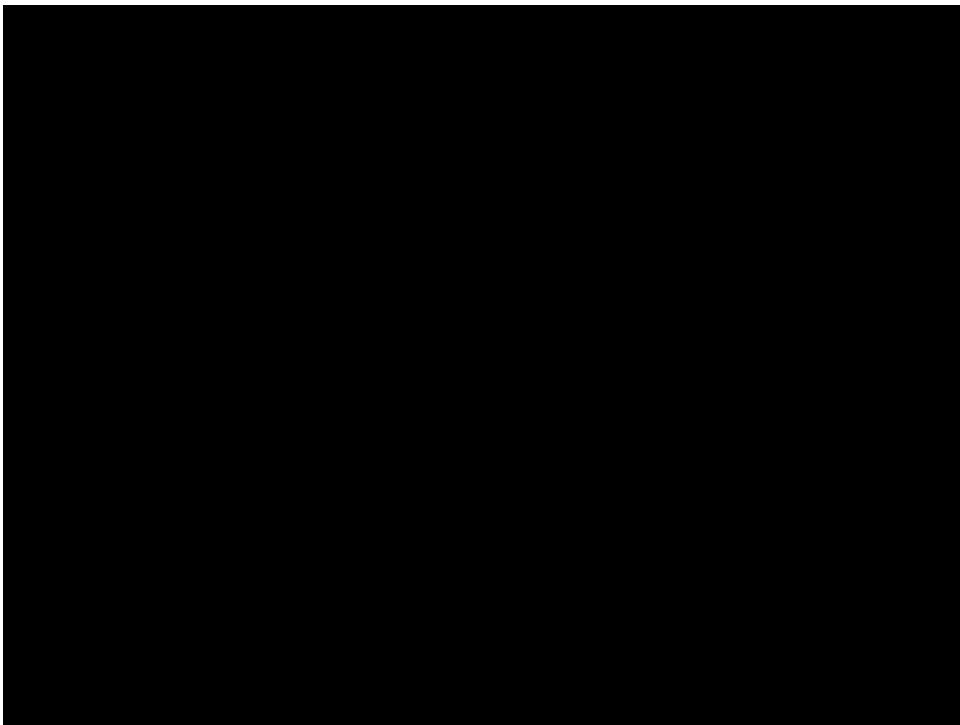
Magnet Safety - (courtesy of GE Medical Systems)



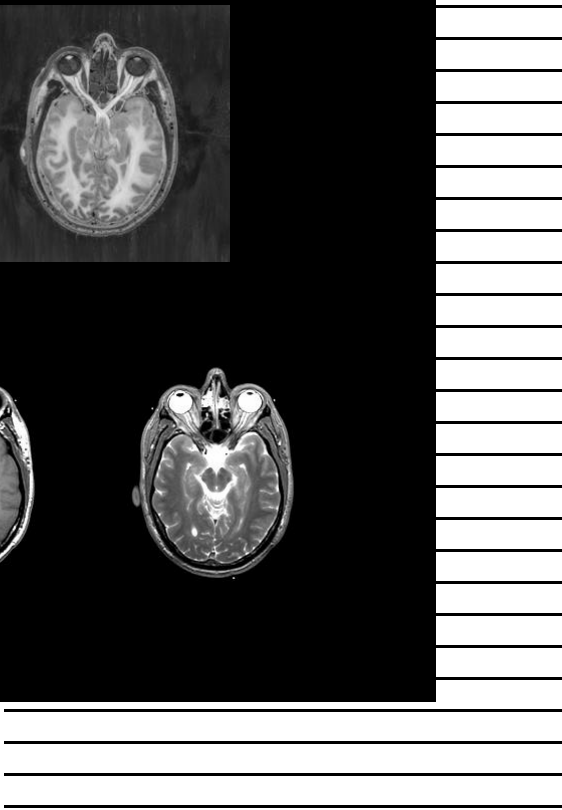
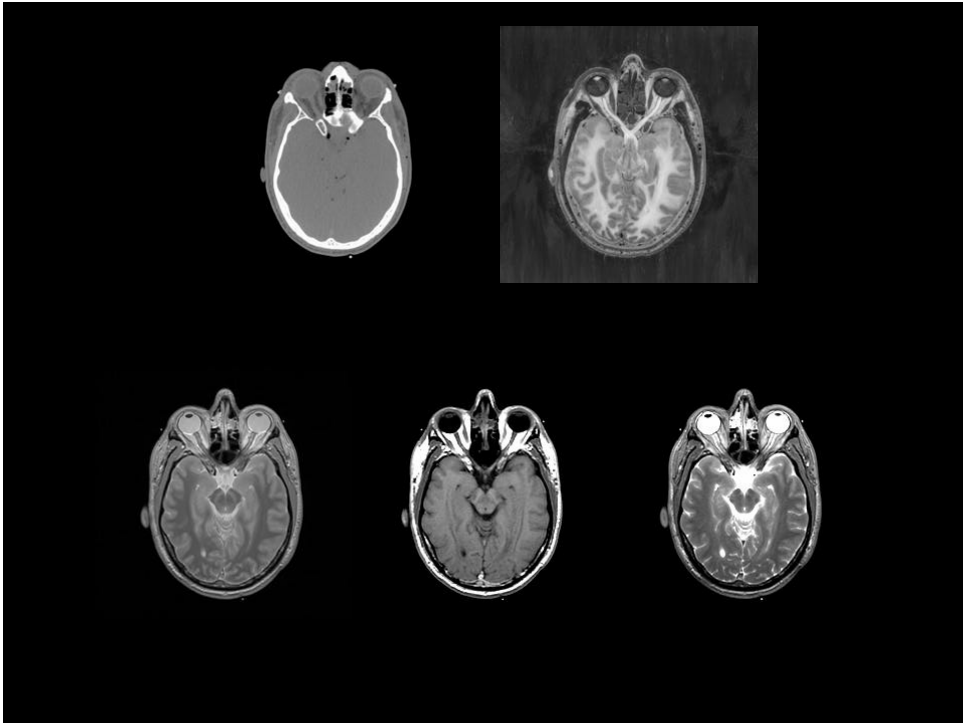


Horizontal lines for text input.

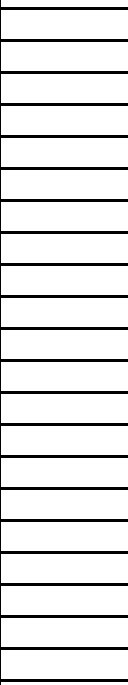
Horizontal lines for text input.

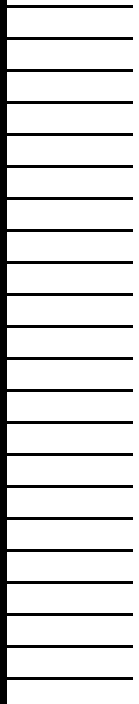
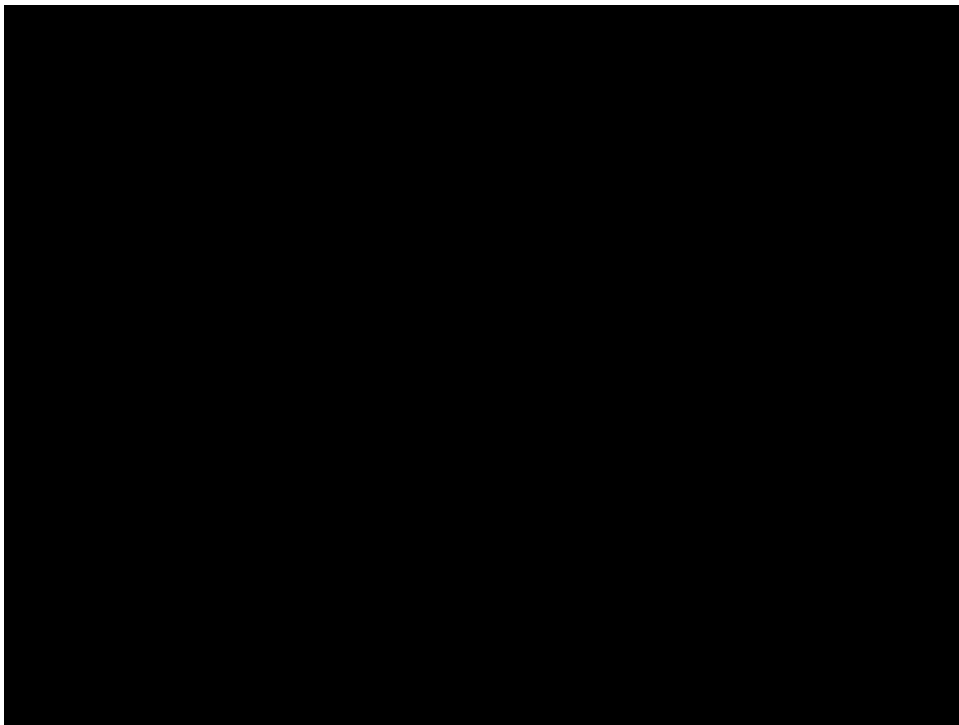
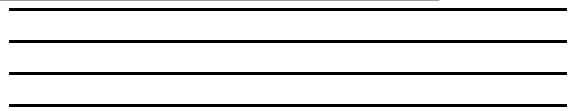
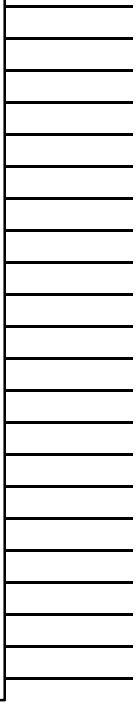
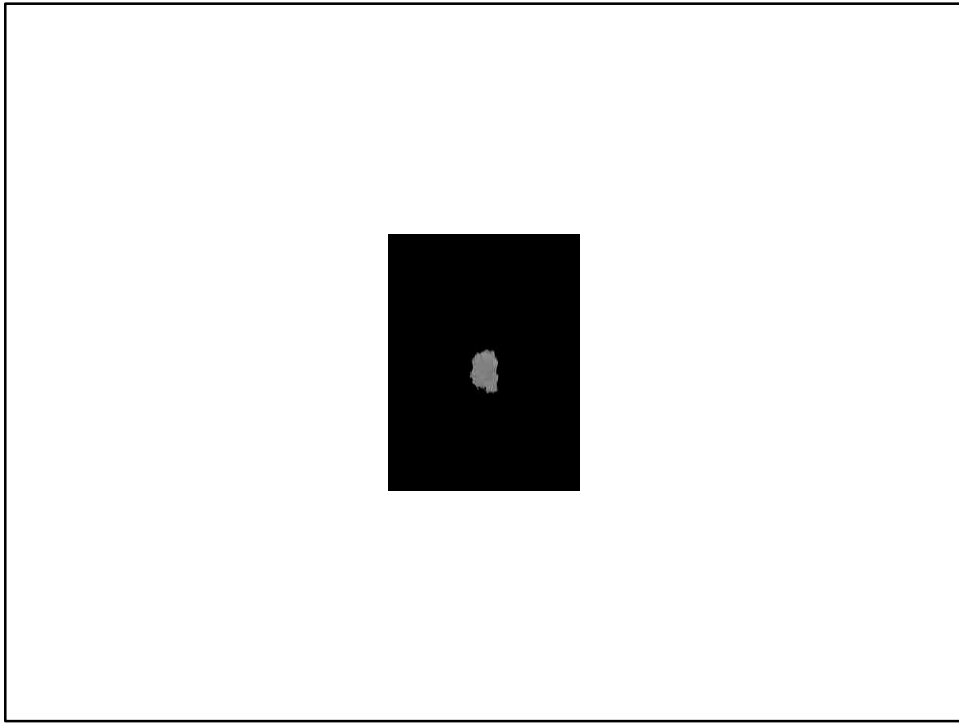


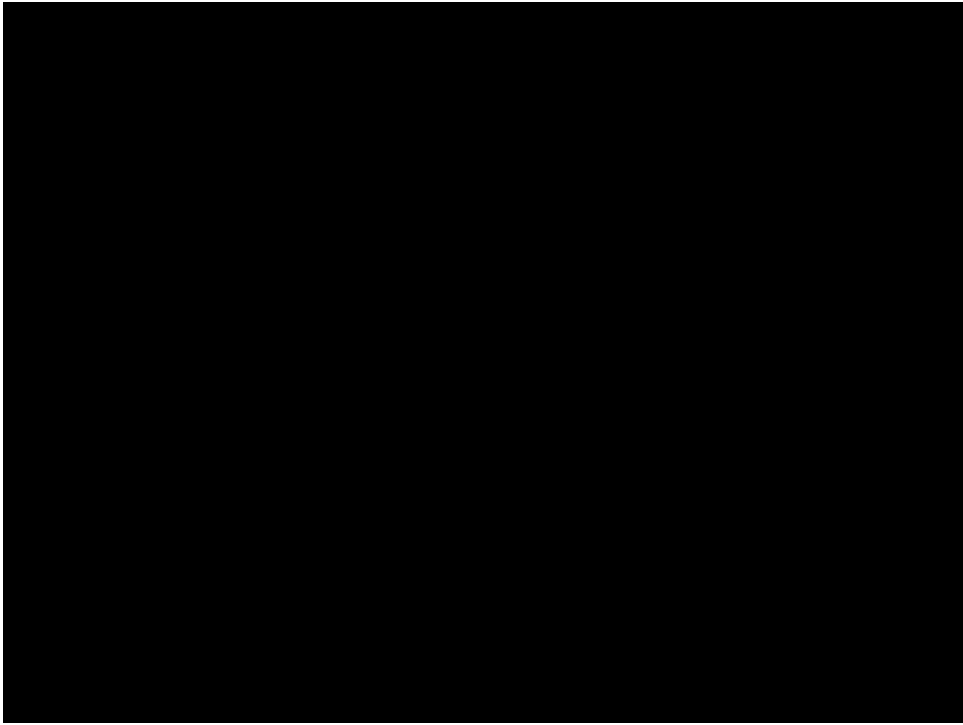
Horizontal lines for text input.



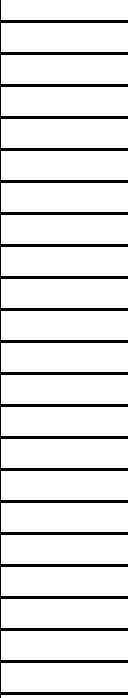
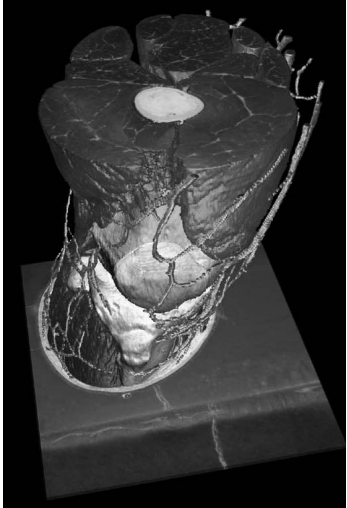
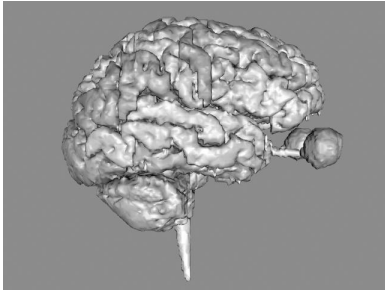
Visible Human Data Acquisition







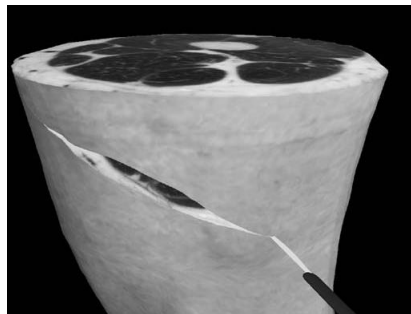
Visualization / Education



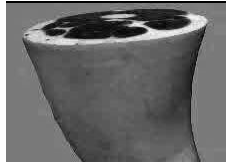
Visualization / Education



Simulation / Training



Simulation - Univ. of Colorado

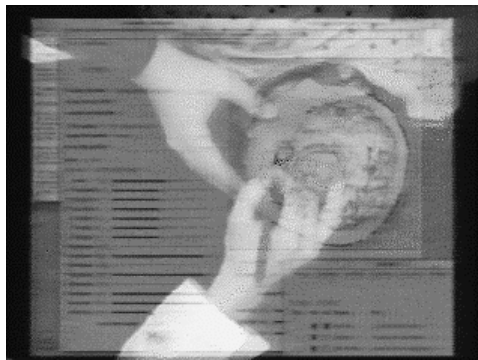


Haptic Training Simulator - Univ. of Colorado

Computer Assisted Therapy



Augmented Reality - BWH



Augmented Reality - Harvard BWH

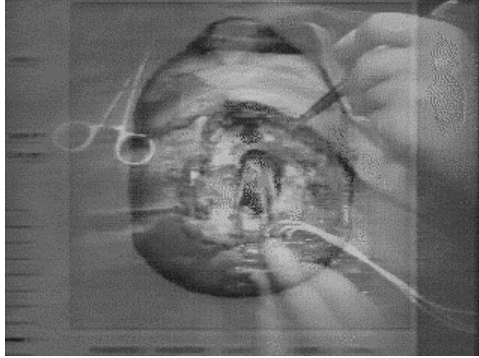
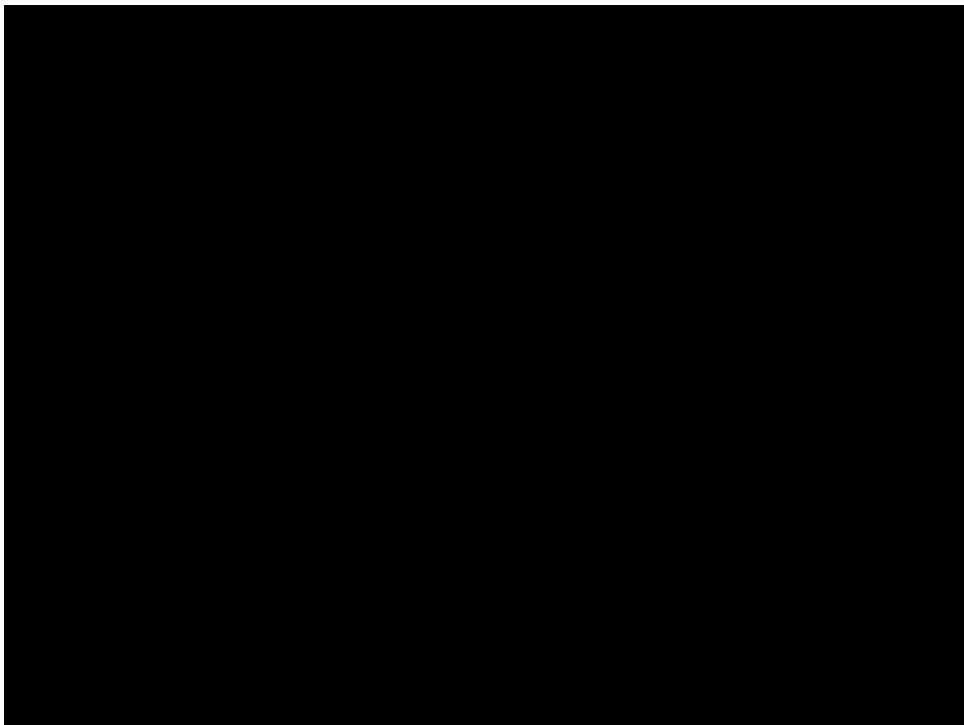
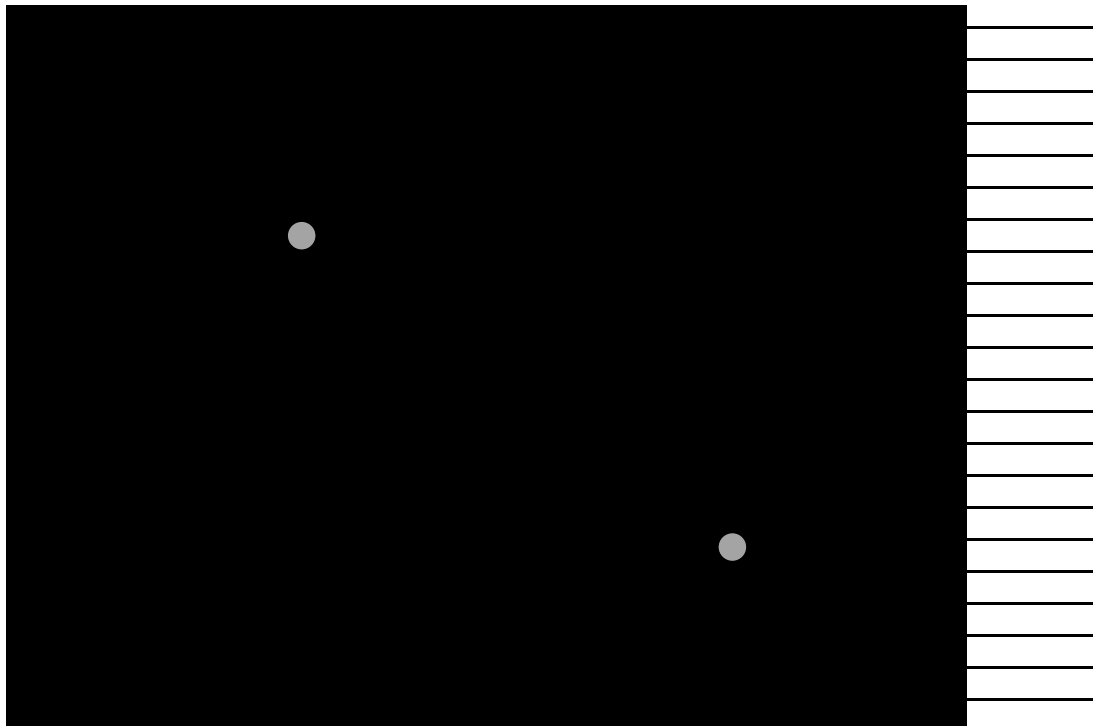
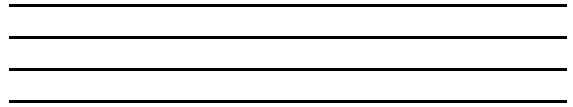
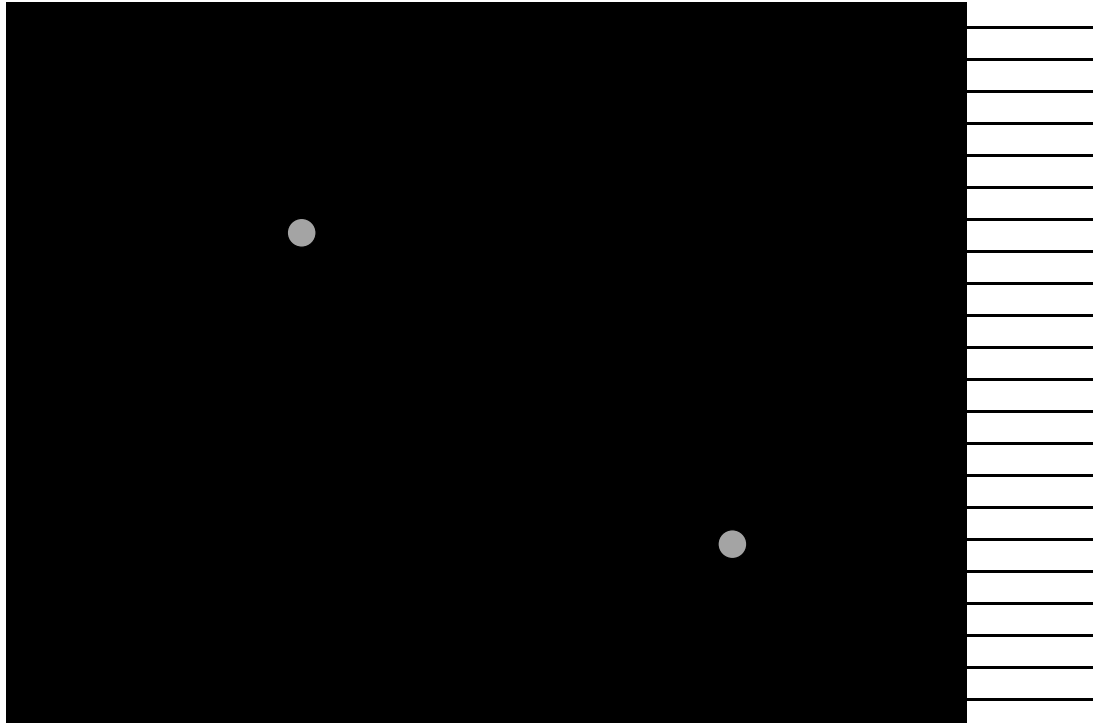


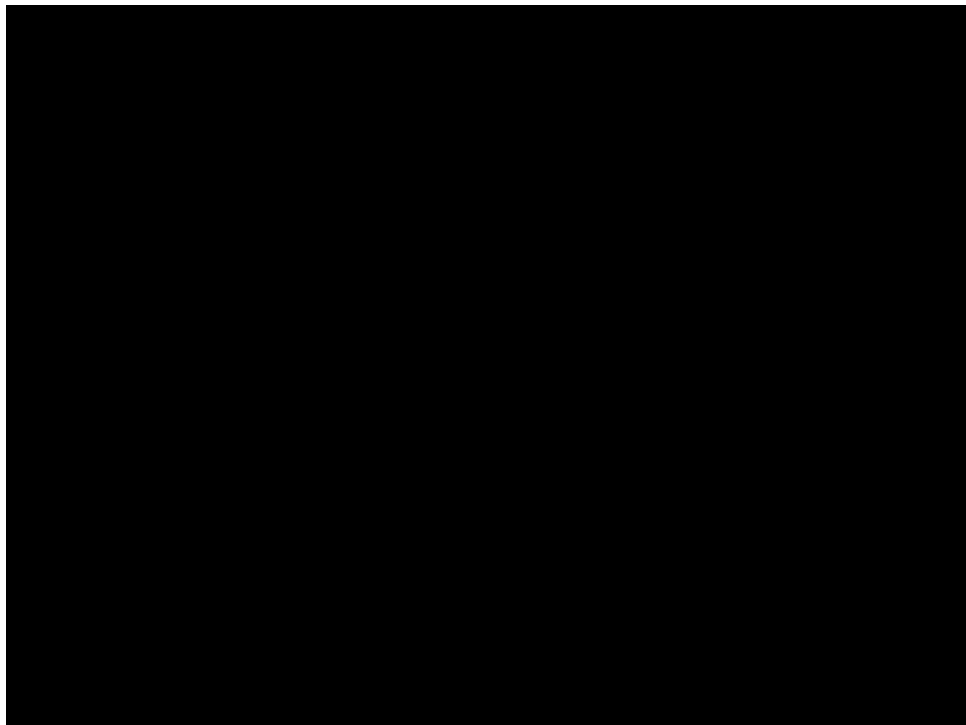
Image Guided Therapy

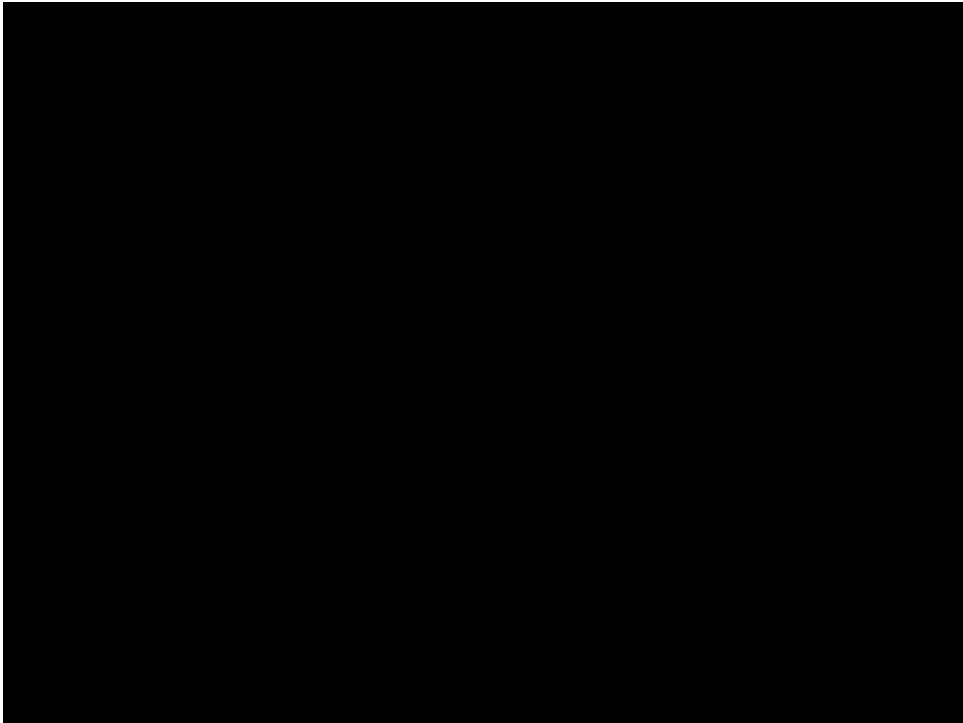
Treatment - Georgia Tech





Model Size: 1-100 Million Triangles



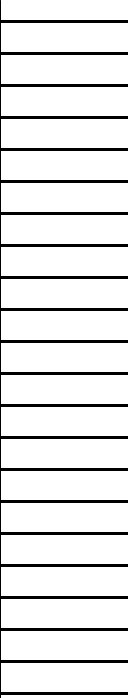


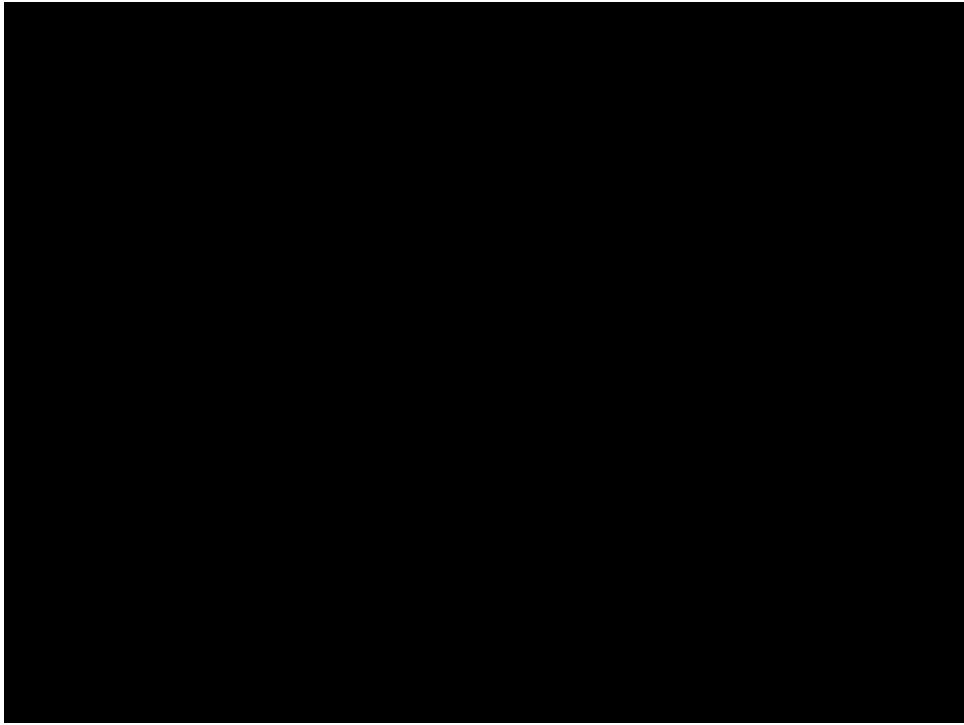
640 x 480 Pixel, stereo, HMD



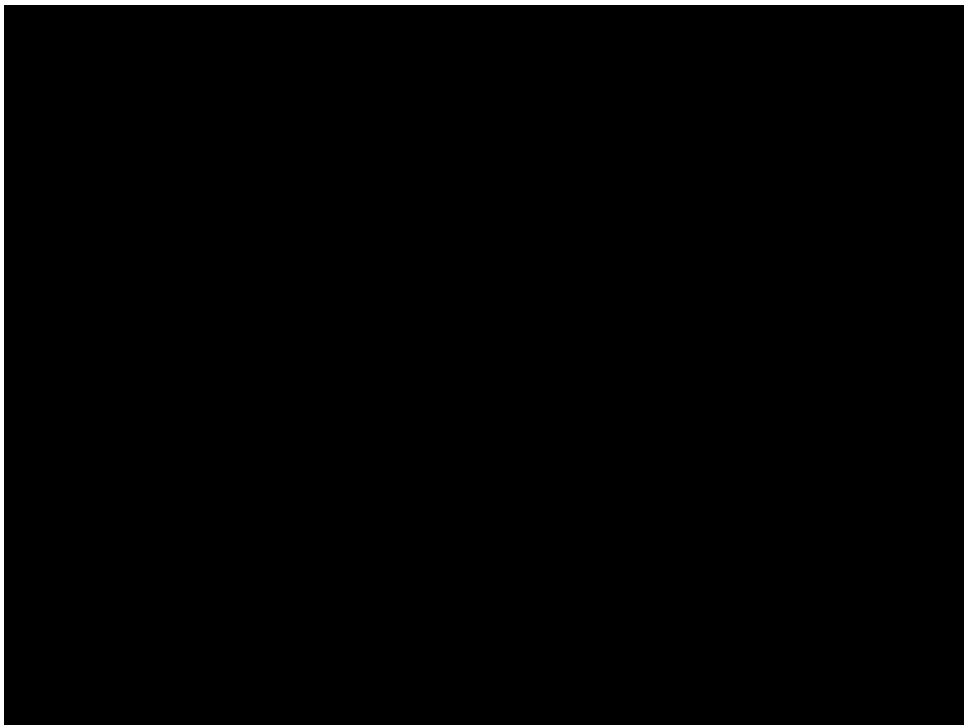


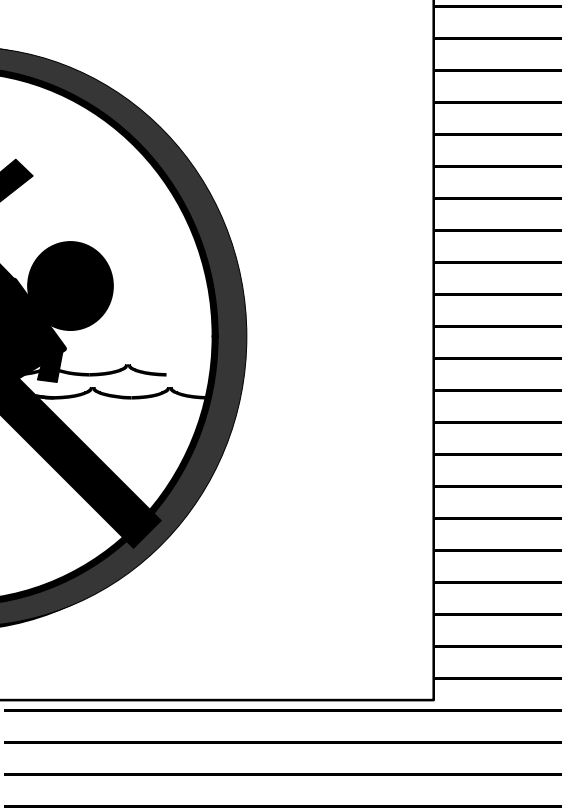
Haptic devices by Sensable



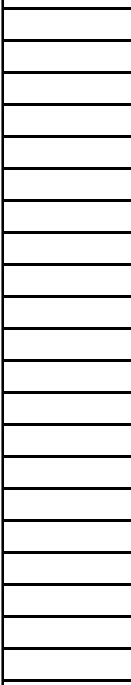


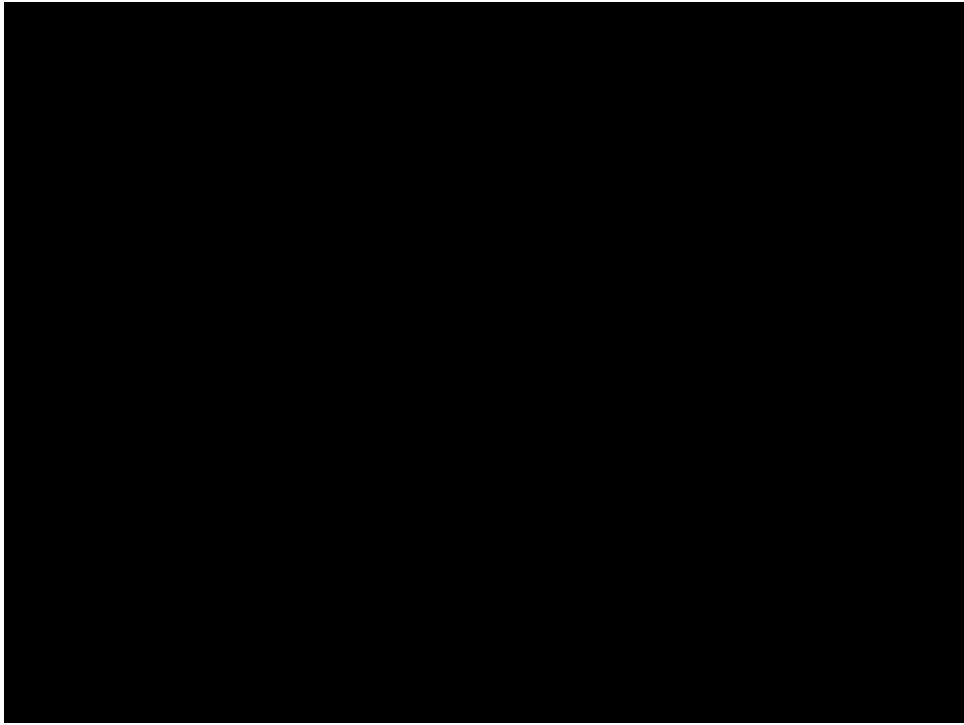
Three thin, horizontal black lines are visible, representing a small section of text or a table row that is partially obscured by the redaction above.



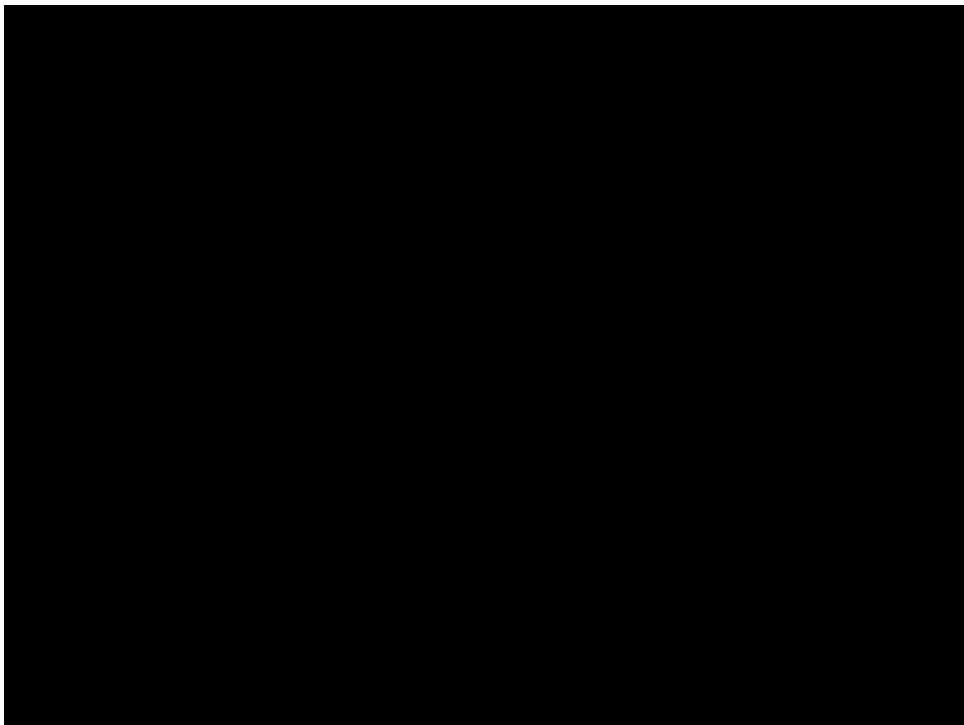


Augmented Reality Ultrasound circa 1991



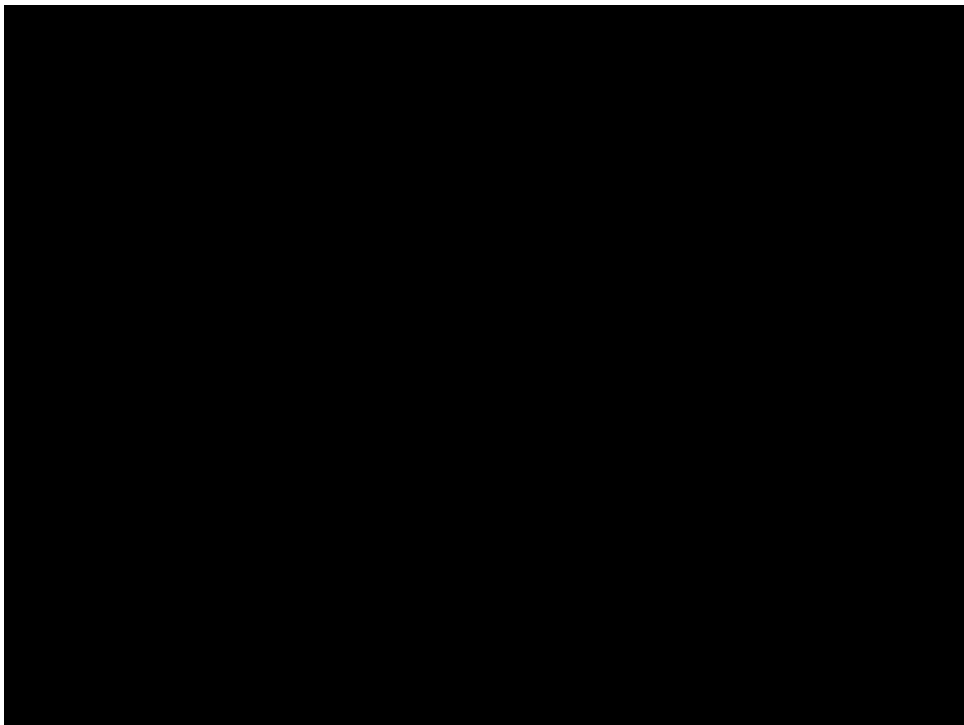


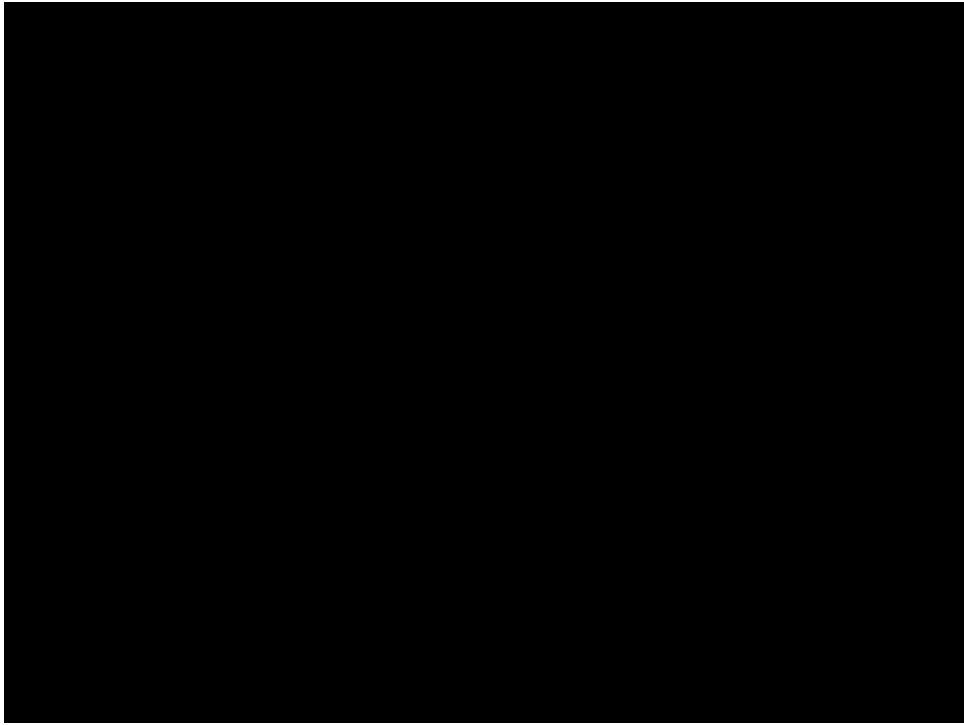
Three horizontal lines are visible, likely representing a section header or a separator between sections of text.



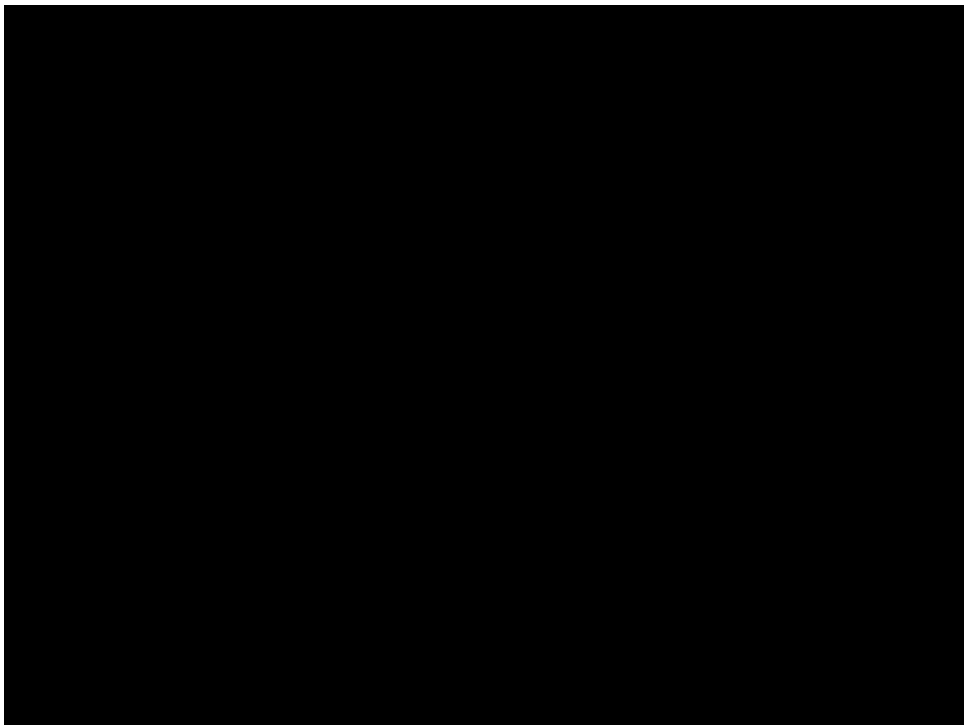


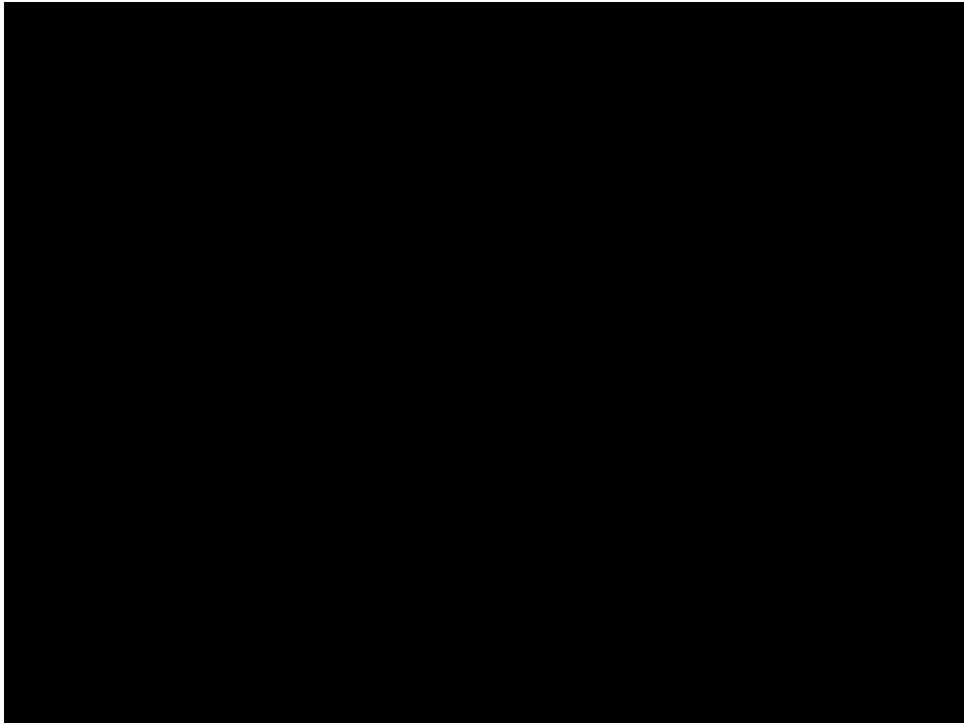
Three thin, horizontal black lines are visible, representing a small section of text or a list item that is partially obscured by the redaction above.



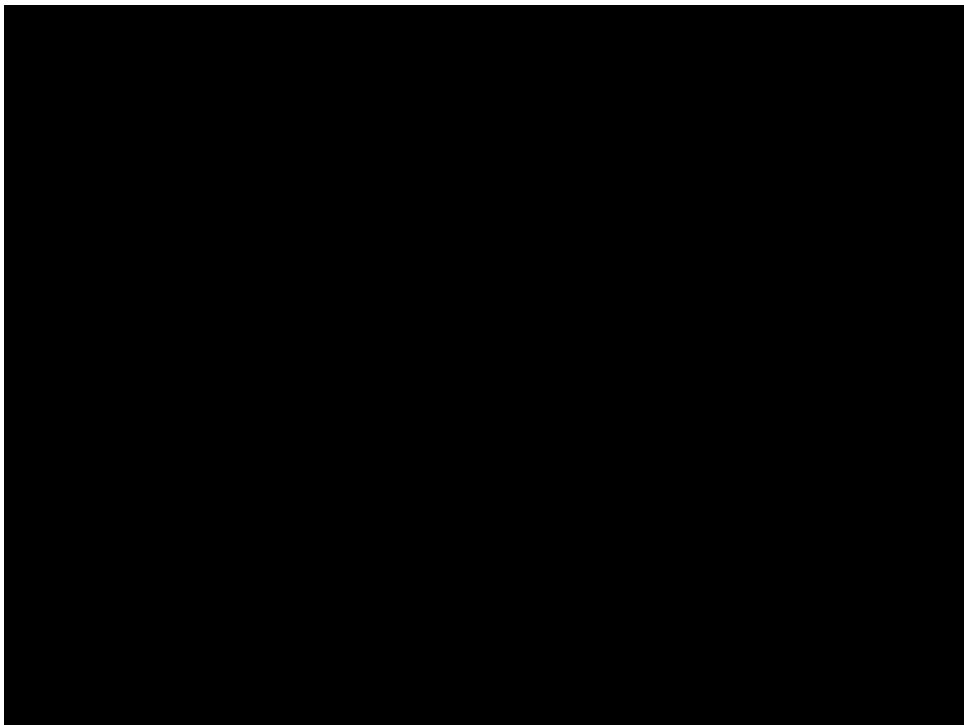


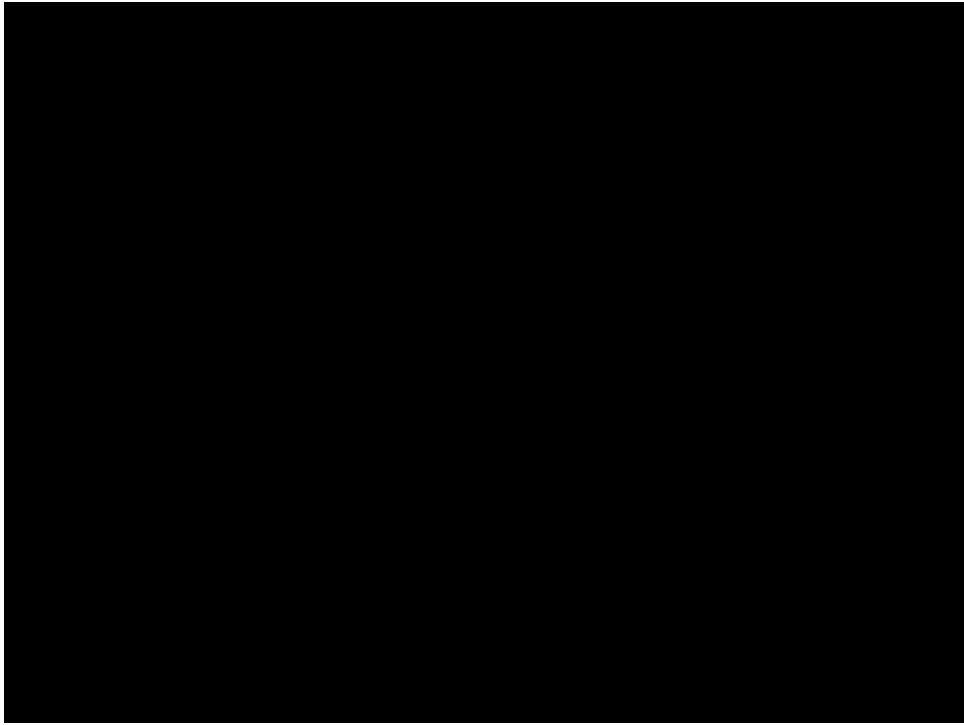
Three thin, horizontal black lines are visible, representing a small section of text or a table row that is partially obscured by the redaction above.



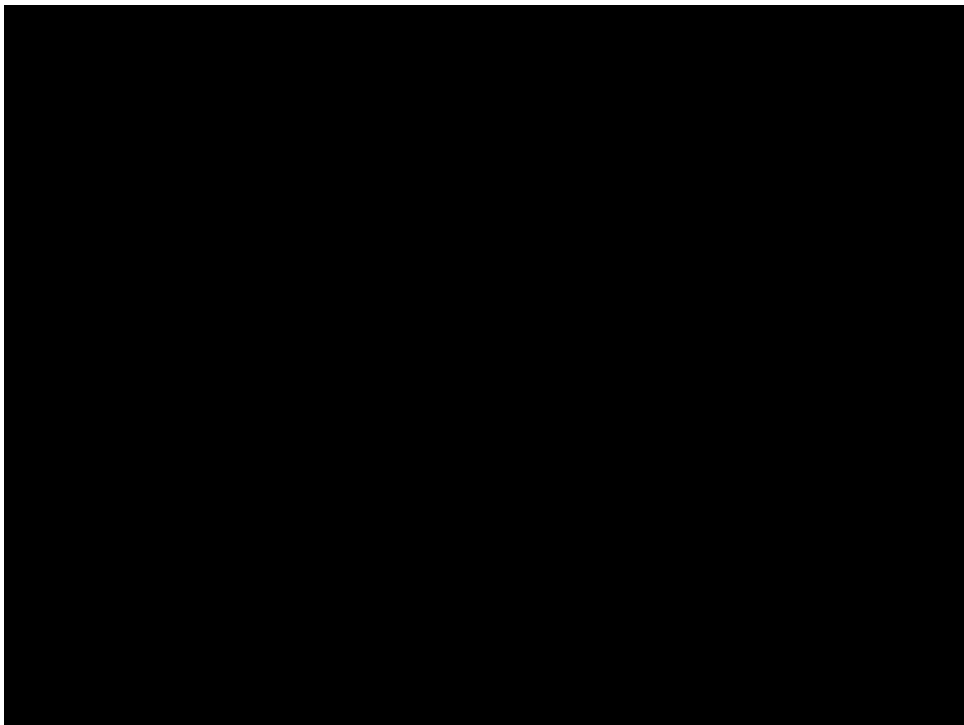


Three thin, horizontal black lines are visible, representing a small section of text or a table row that is partially obscured by the redaction above.



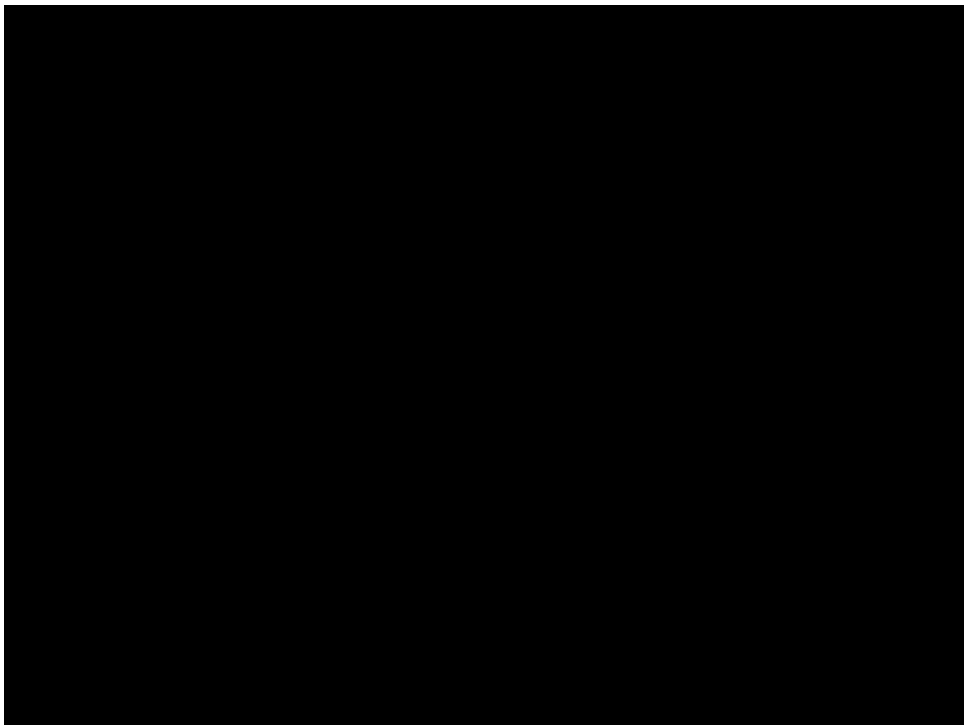


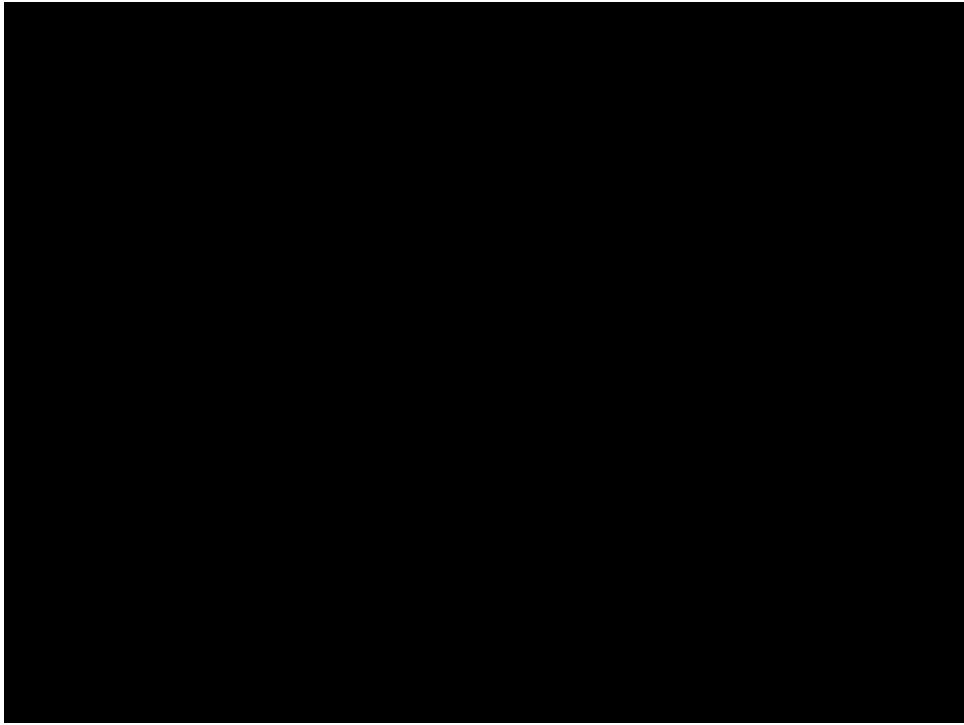
Three thin, horizontal black lines are visible, likely representing a section header or a separator line between the two redacted areas.



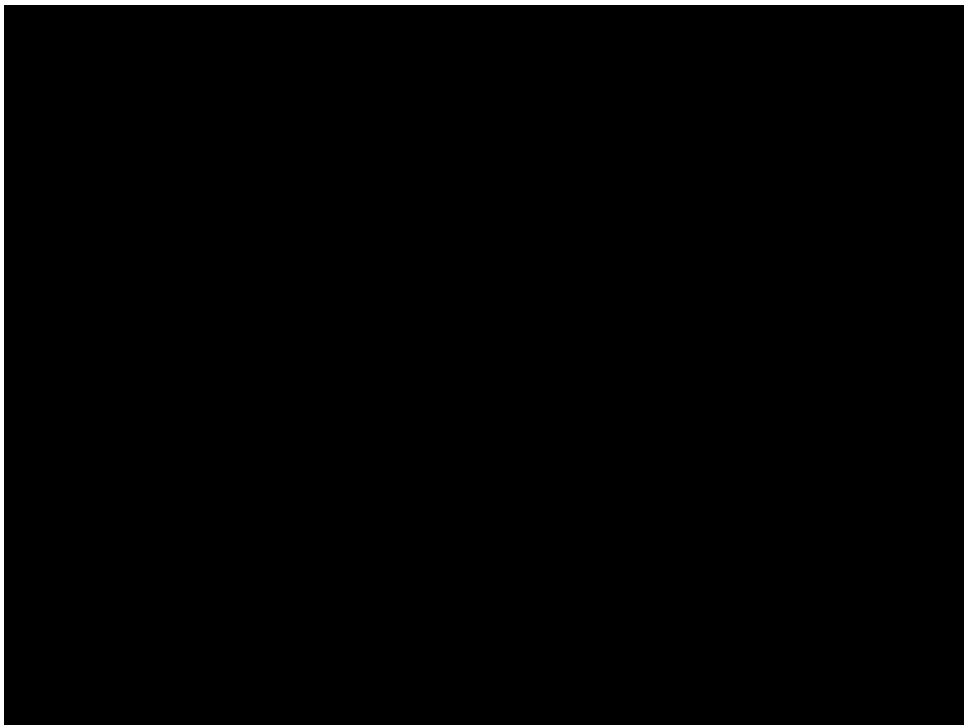


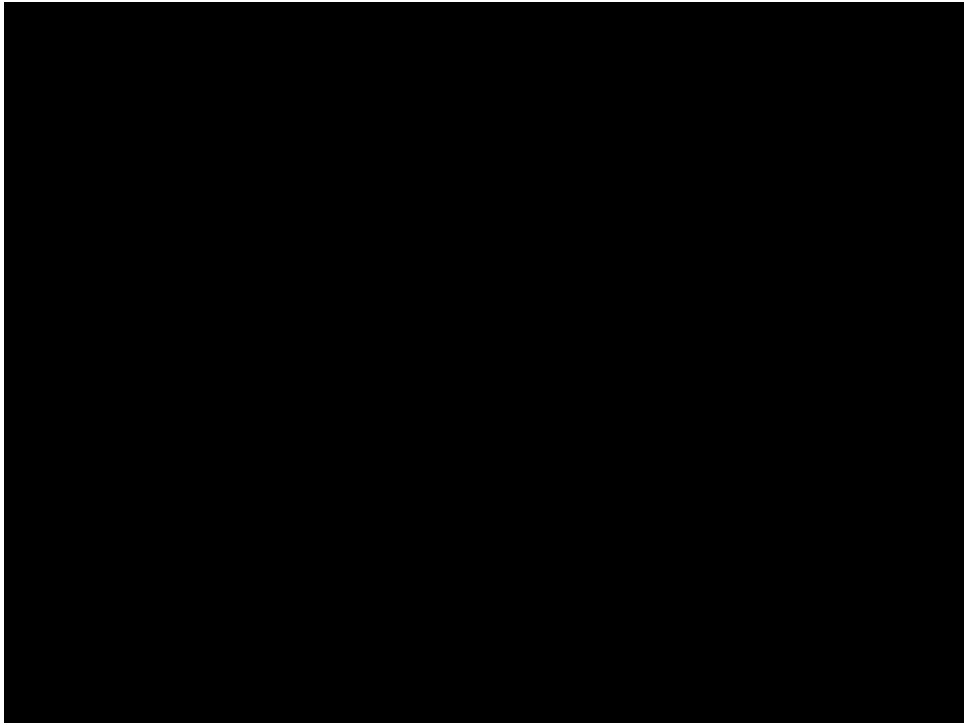
Three thin, horizontal black lines are visible, likely representing a section header or a separator line within the redacted content.



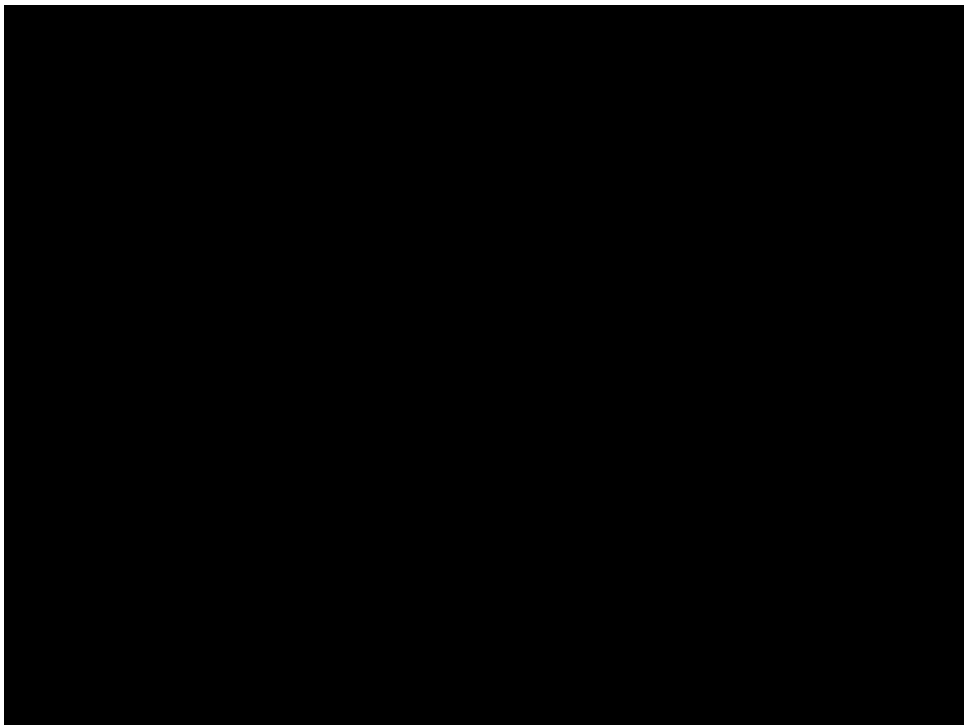


Three thin, horizontal black lines are visible, representing a small section of text or a table row that is partially obscured by the redaction above.



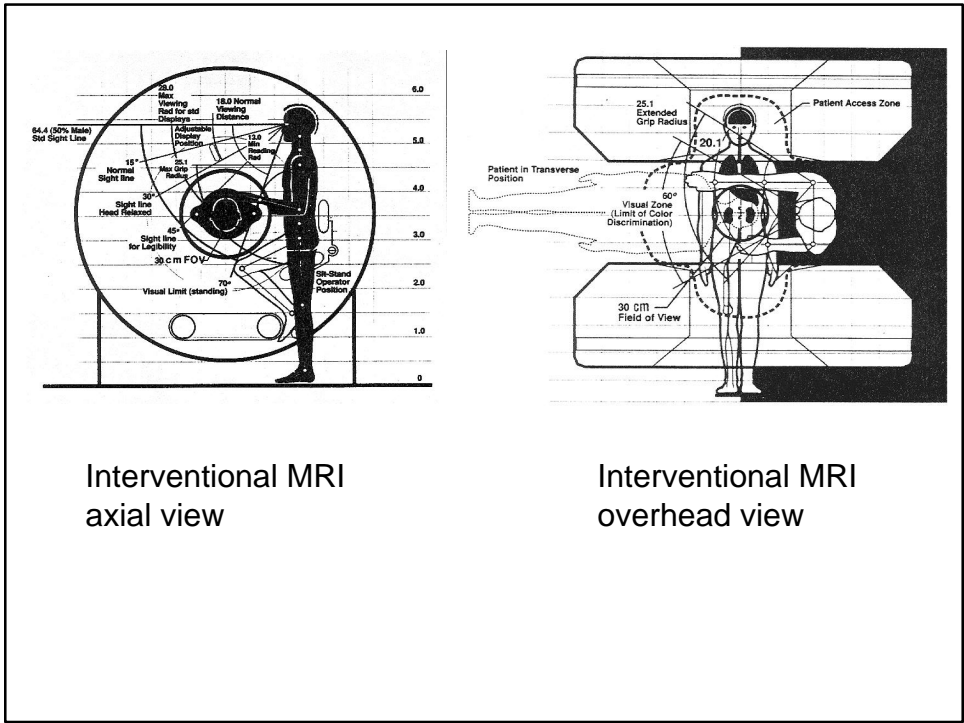
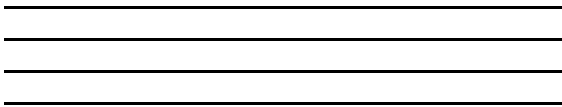


Three thin, horizontal black lines are positioned in the center of the page, between the two main redacted sections.



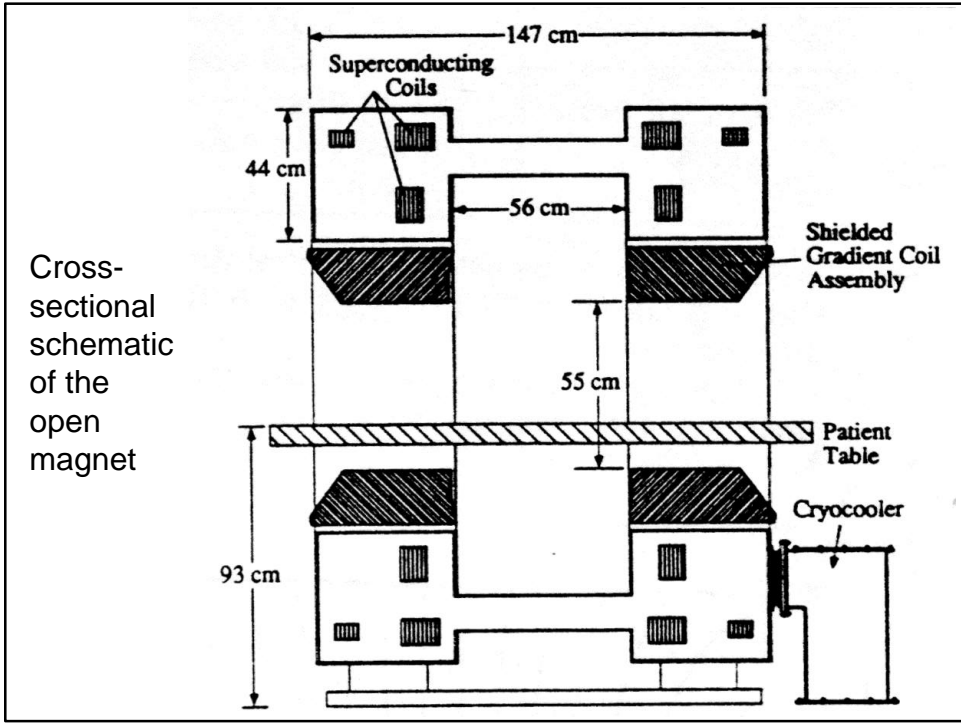
	IMR	Conventional OR
Length of Stay	3.3 Days	6.4 days
Cost/Charge Ratio	71.77%	74.10%
	Cost reduction IMR	32%
	Charge Reduction	29.60%

	IMR	Conventional OR
Adults		
Primary	0%	18%
Recurrent	7%	45%
Pediatric		
Primary	0%	32%
Recurrent	33%	50%

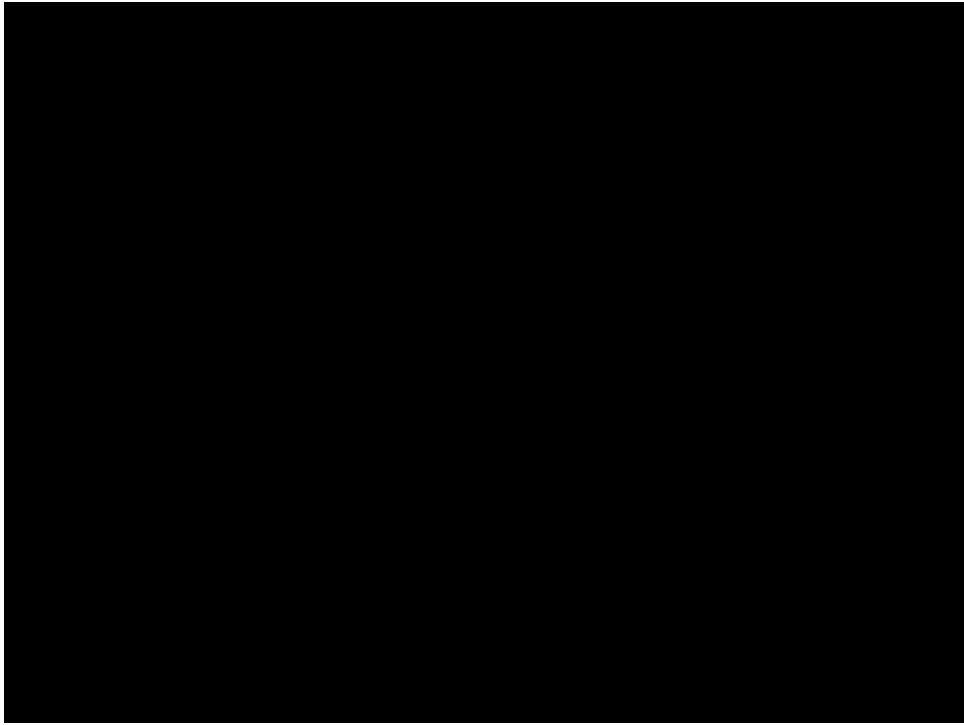


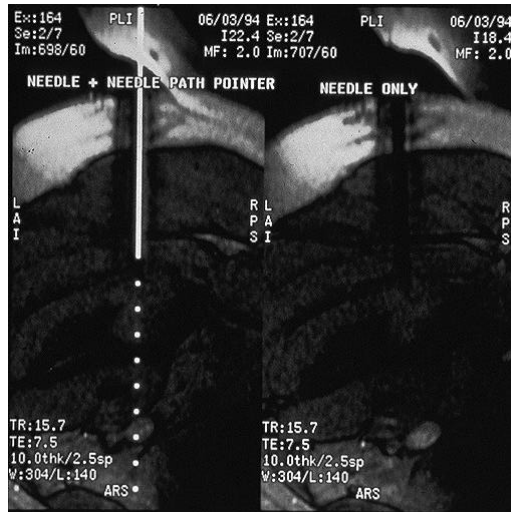
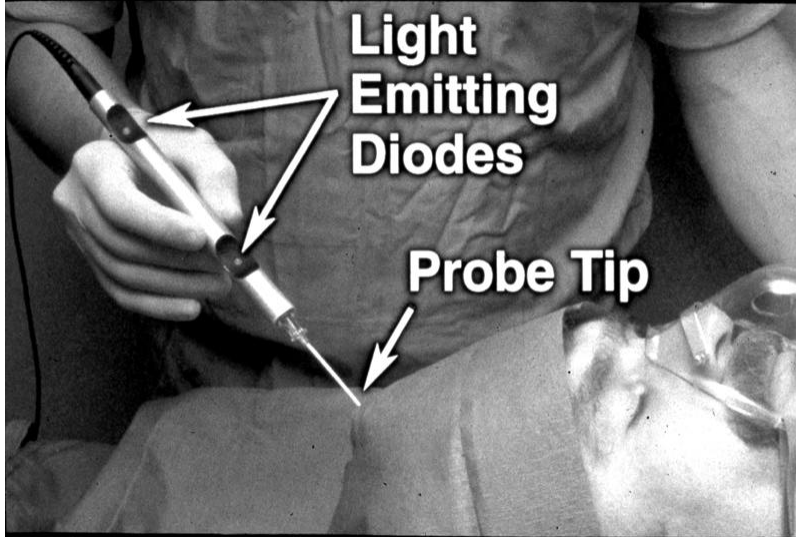
Interventional MRI
axial view

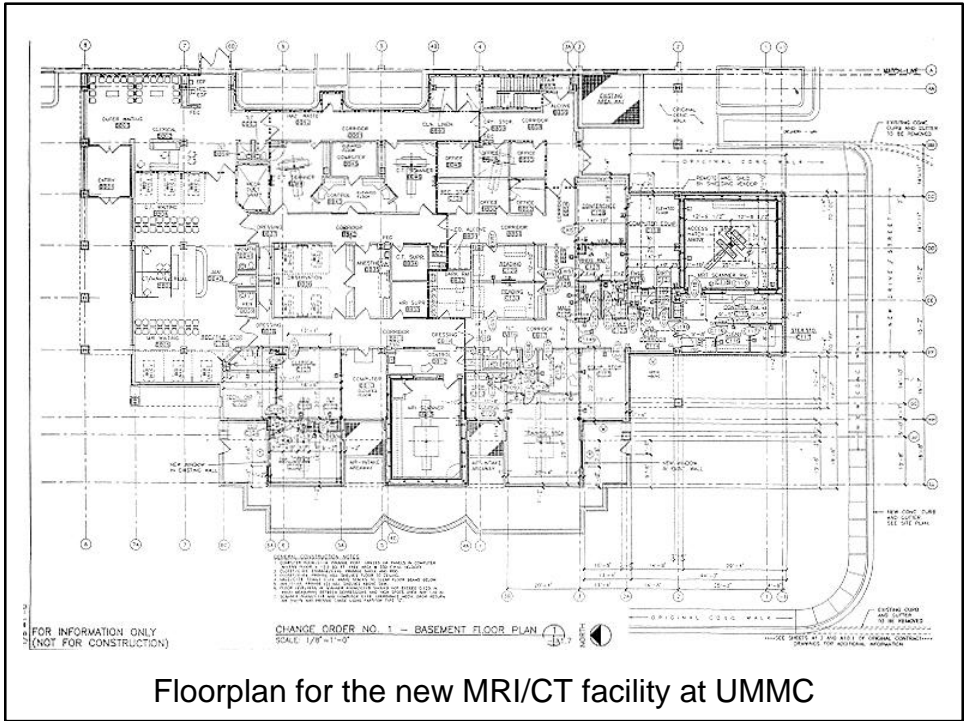
Interventional MRI
overhead view





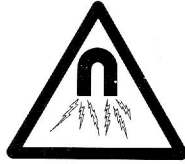






Floorplan for the new MRI/CT facility at UMMC



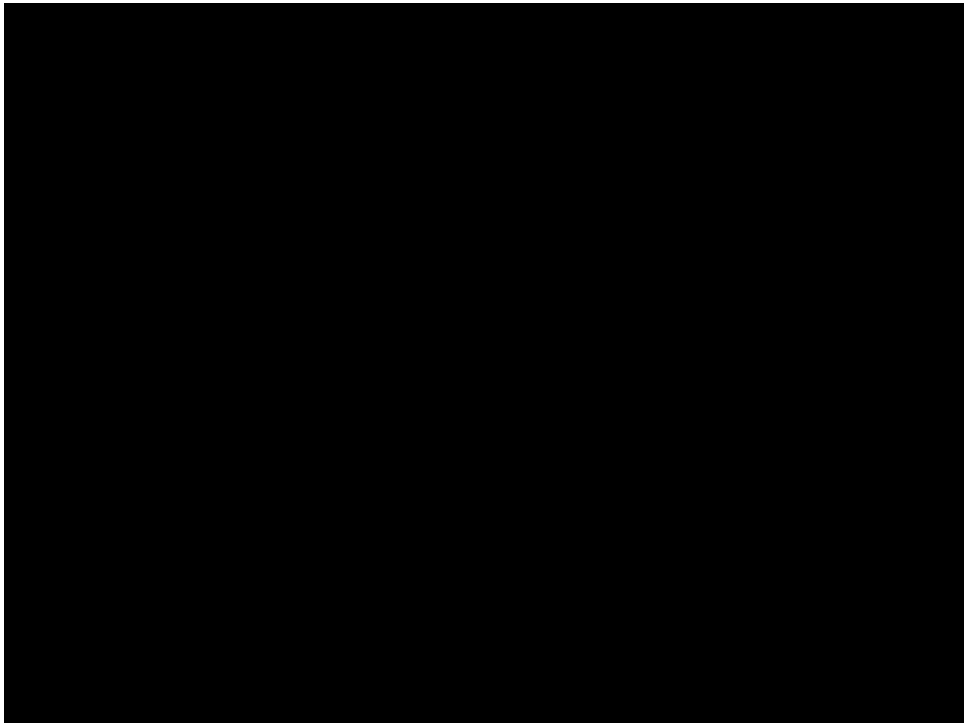


**WARNING
MAGNETIC FIELD**

THE FIELD OF THIS MAGNET ATTRACTS OBJECTS CONTAINING IRON, STEEL, NICKEL OR COBALT. SUCH OBJECTS MUST NOT BE BROUGHT INTO THIS AREA. LARGE OBJECTS CANNOT BE RESTRAINED.

PERSONS WITH IMPLANTS OR PROSTHETIC DEVICES SHOULD NOT ENTER THIS AREA. PACEMAKERS MAY BE DISABLED.

DATA ON CREDIT CARDS AND MAGNETIC STORAGE MEDIA CAN BE ERASED. WATCHES, CAMERAS, AND INSTRUMENTS CAN BE DAMAGED.



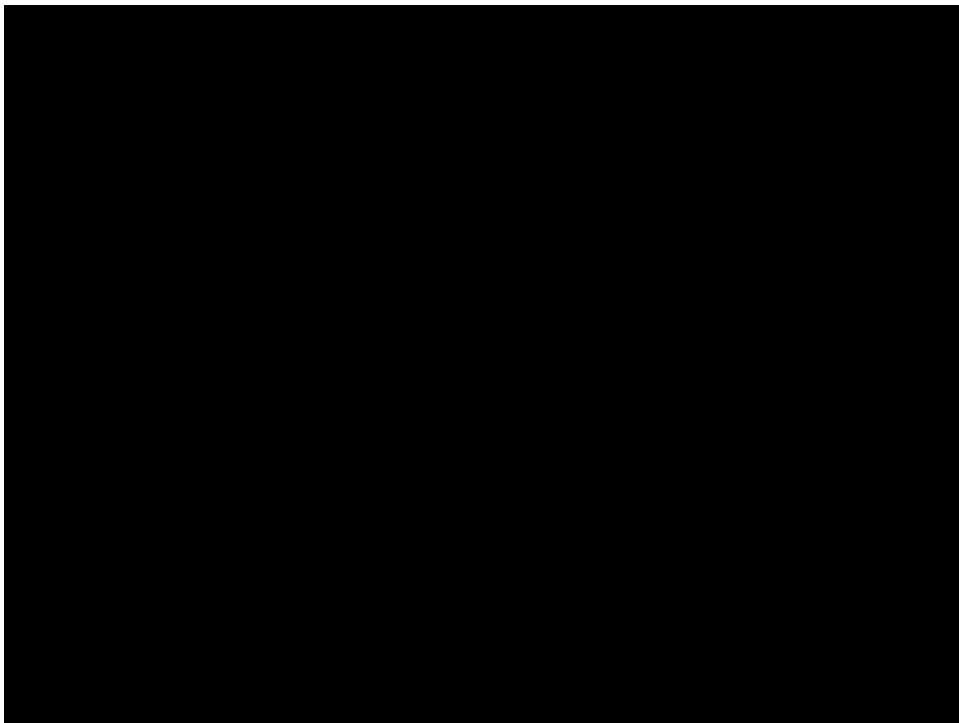
Early view of the
Surgical Simulator
laboratory.

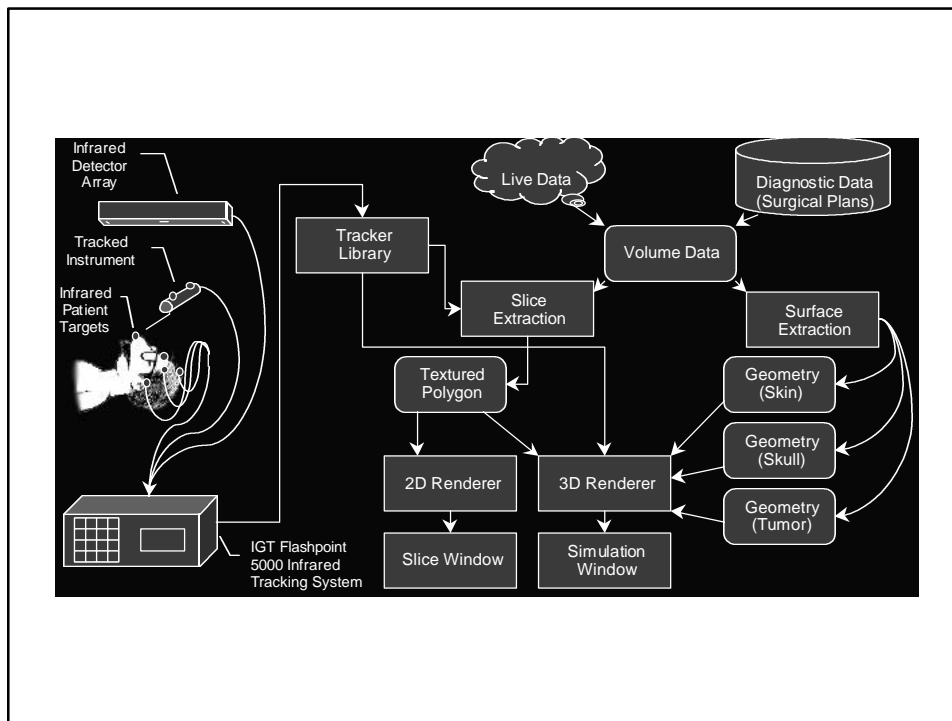
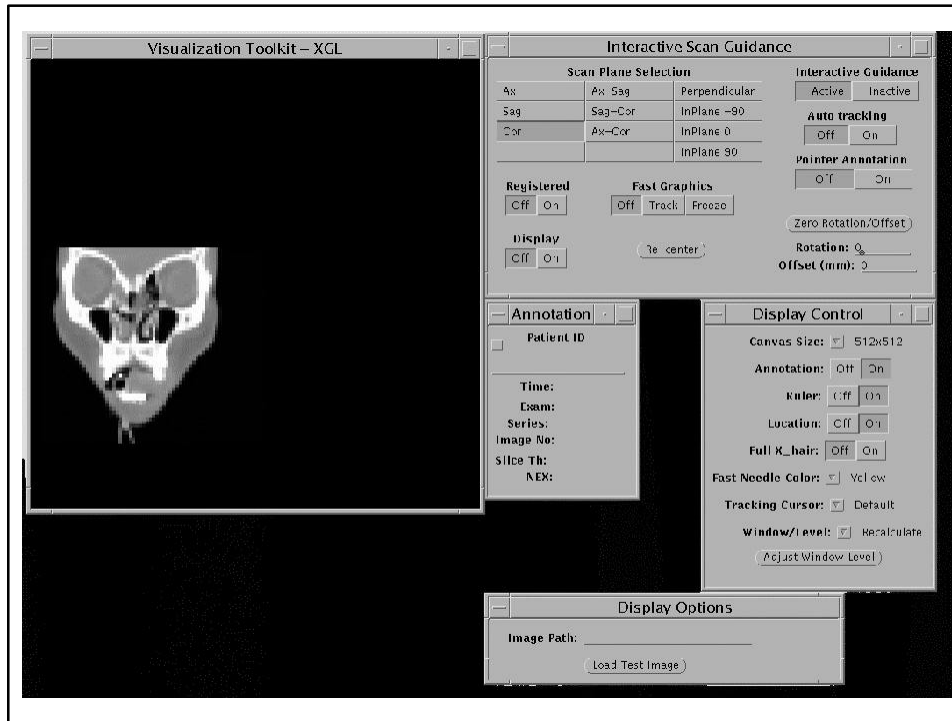
Infrared photodiode array

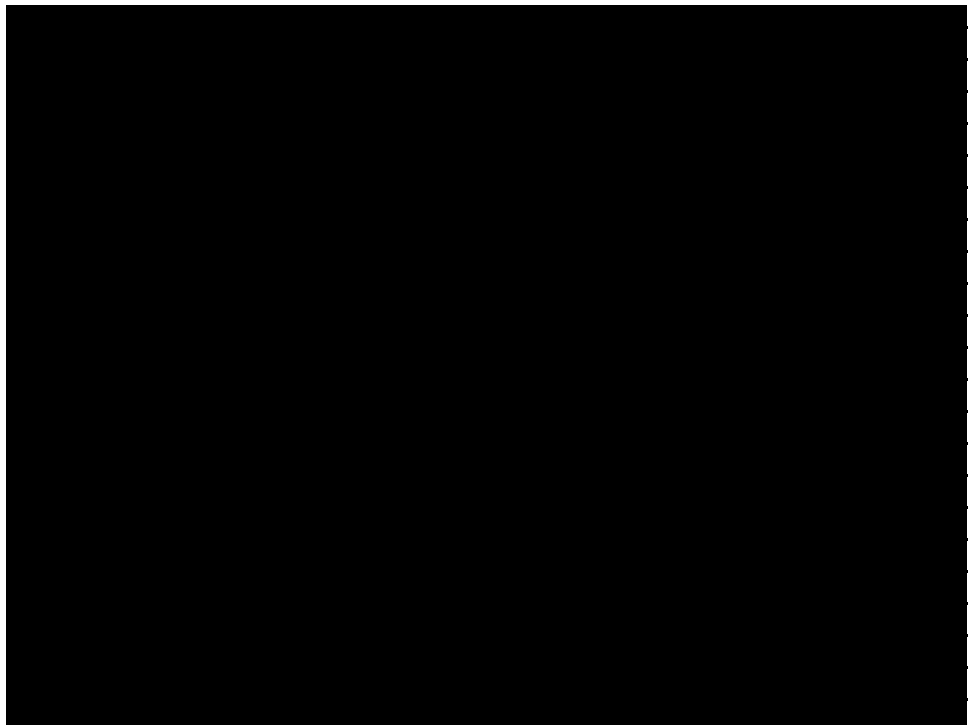
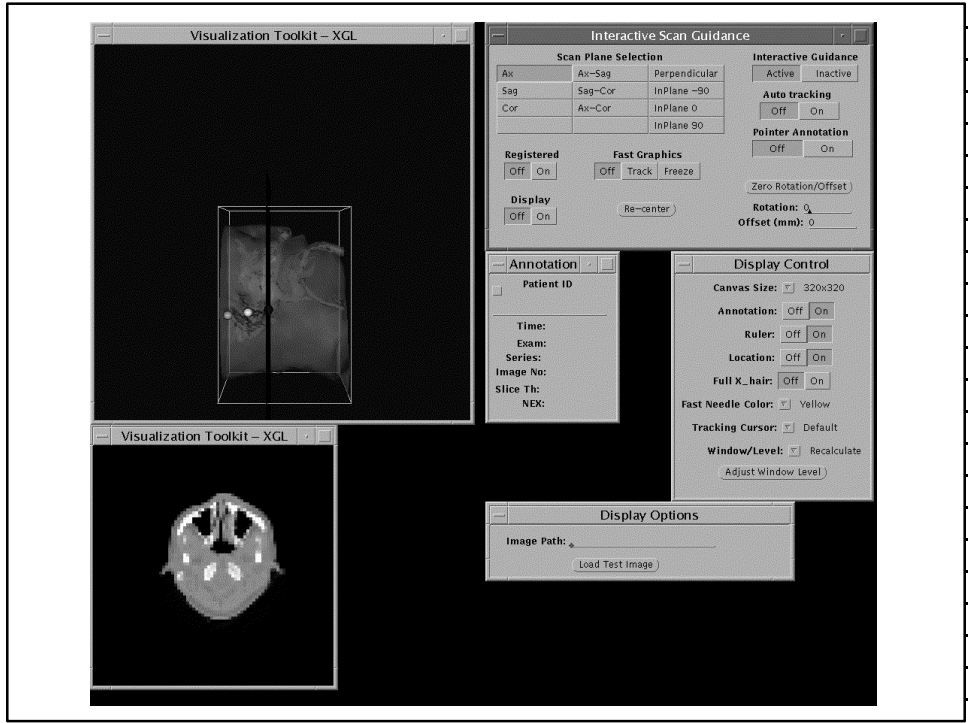
Sun Ultrasparc 2: console
and simulation system

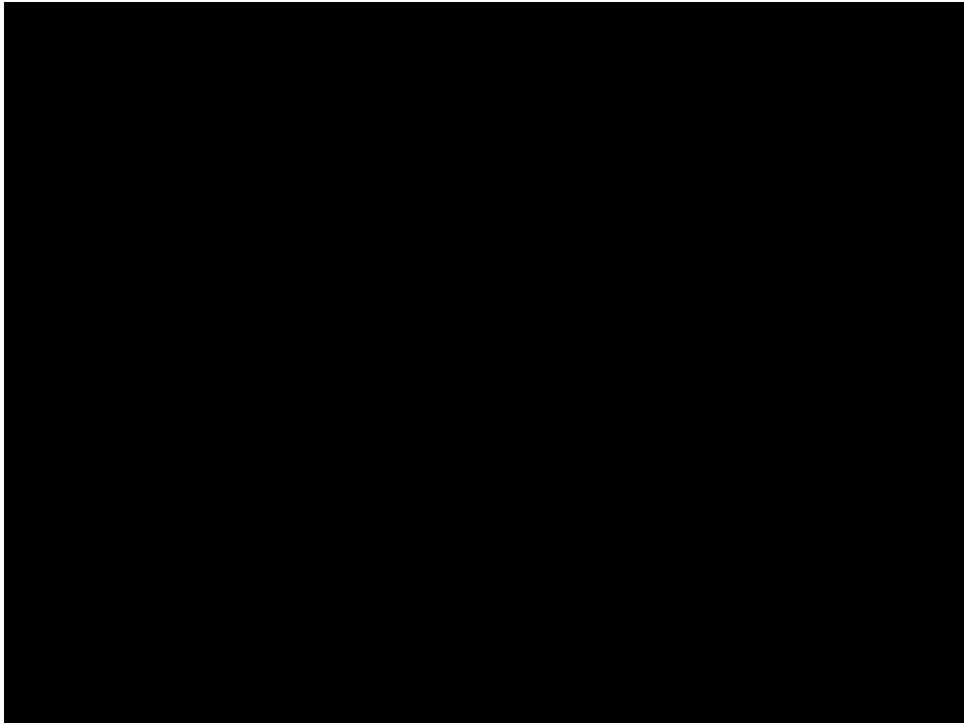
3D Tracking base unit

3D Tracking target

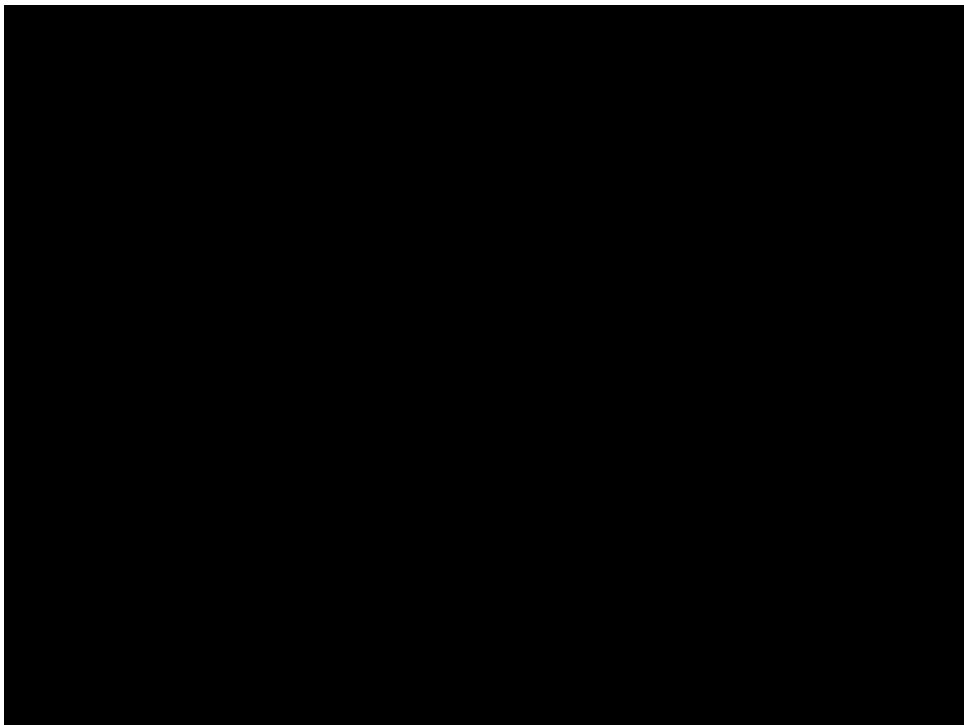


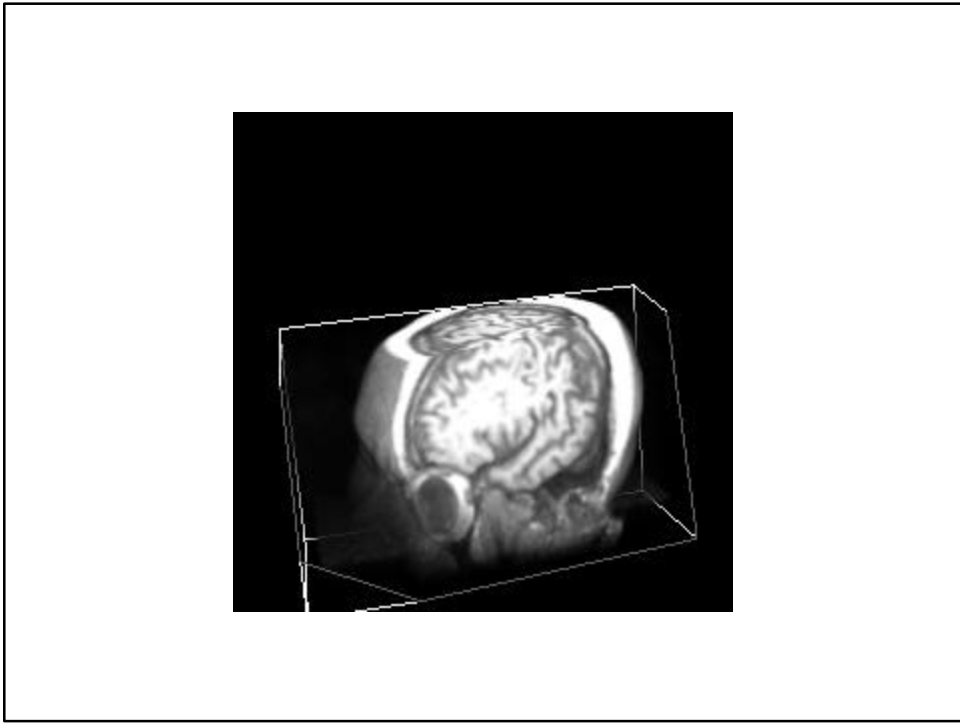






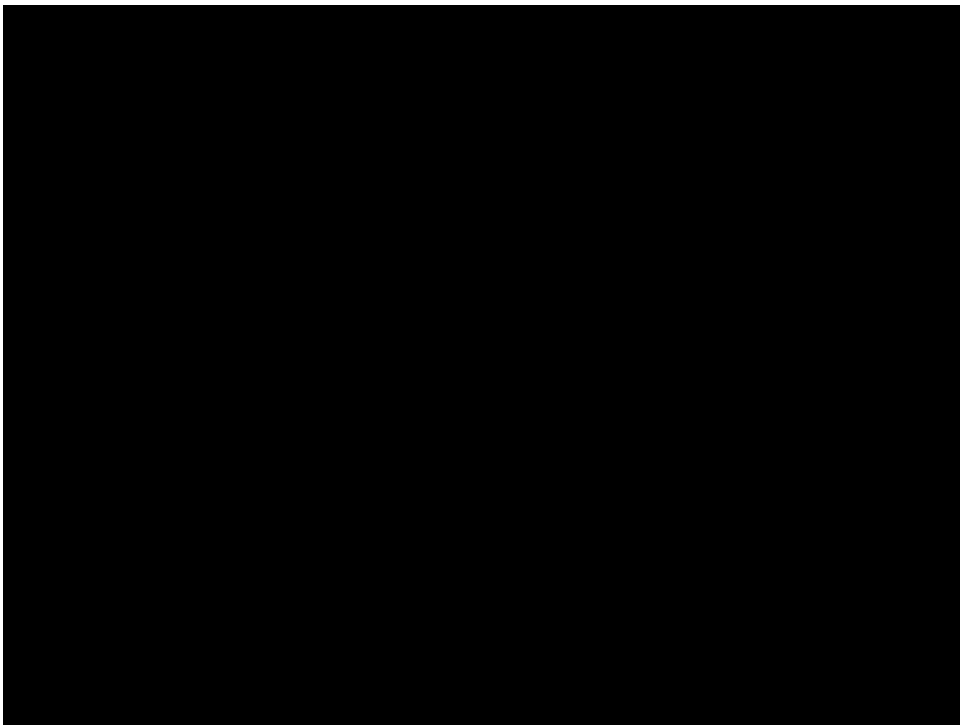
Three thin, horizontal black lines are visible, representing a small section of text or a table row that is partially obscured by the redaction above.



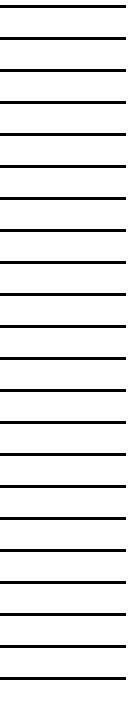
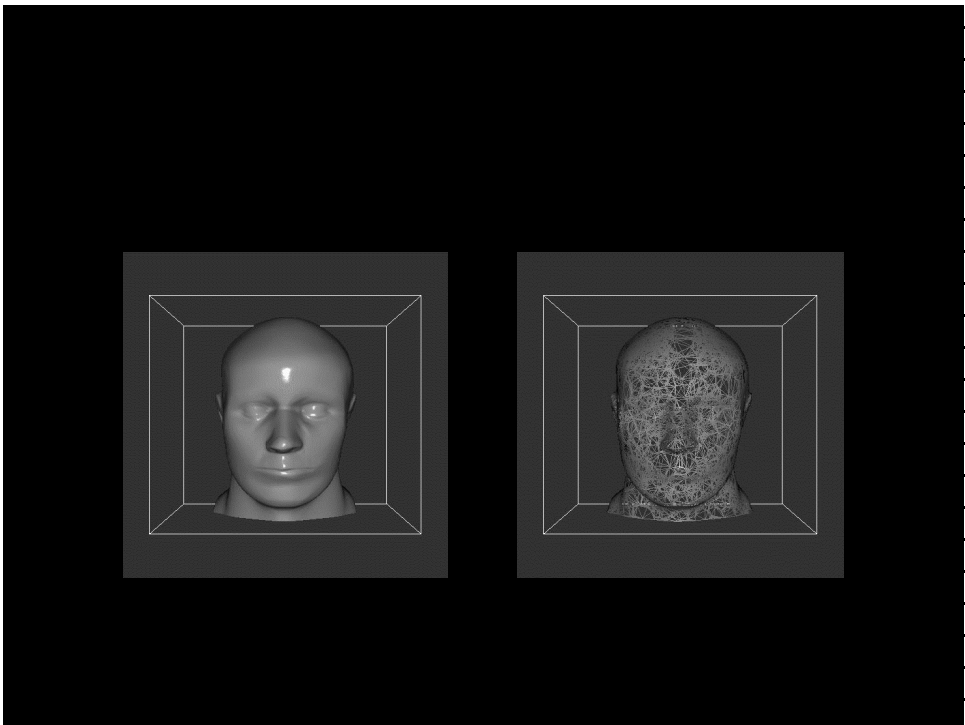
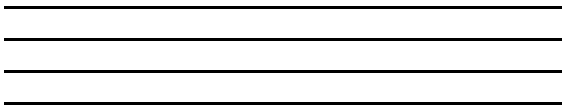
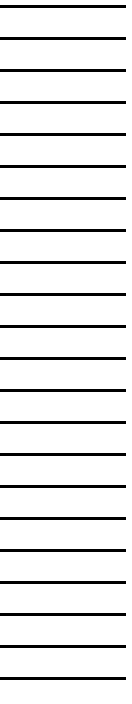
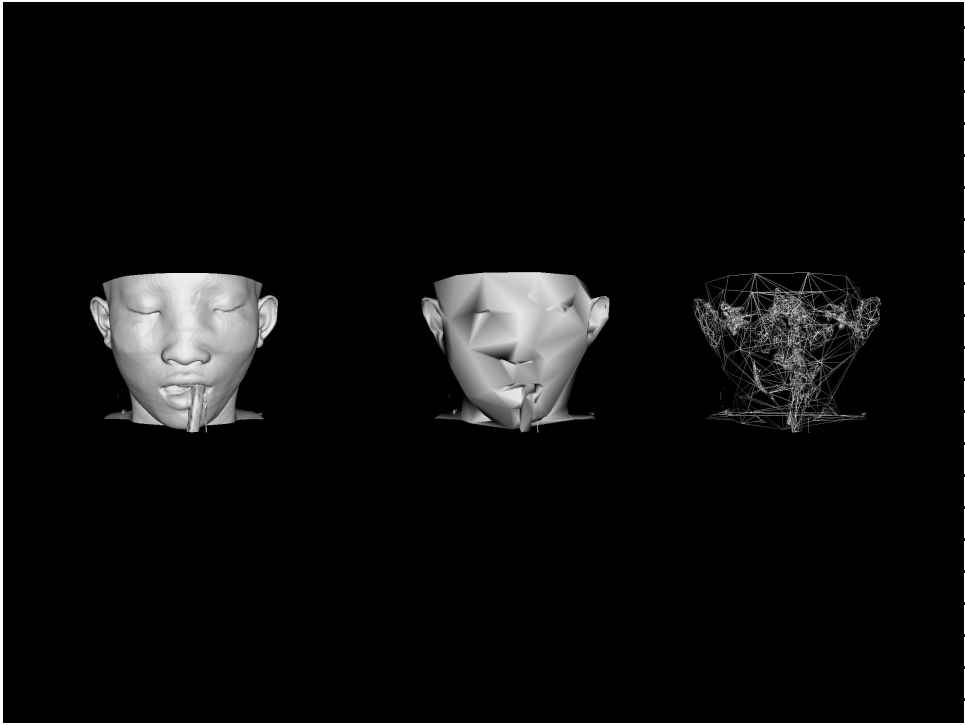


Horizontal lines for text input.

Horizontal lines for text input.



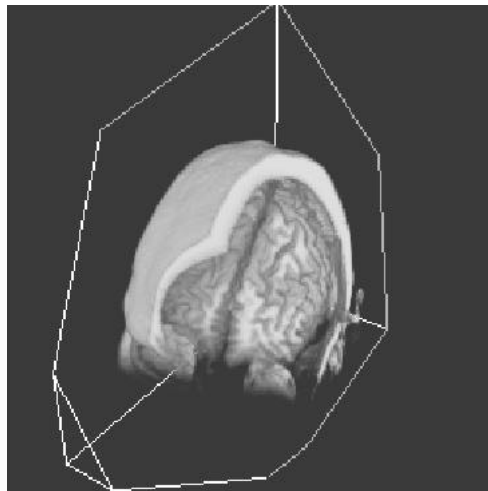
Horizontal lines for text input.

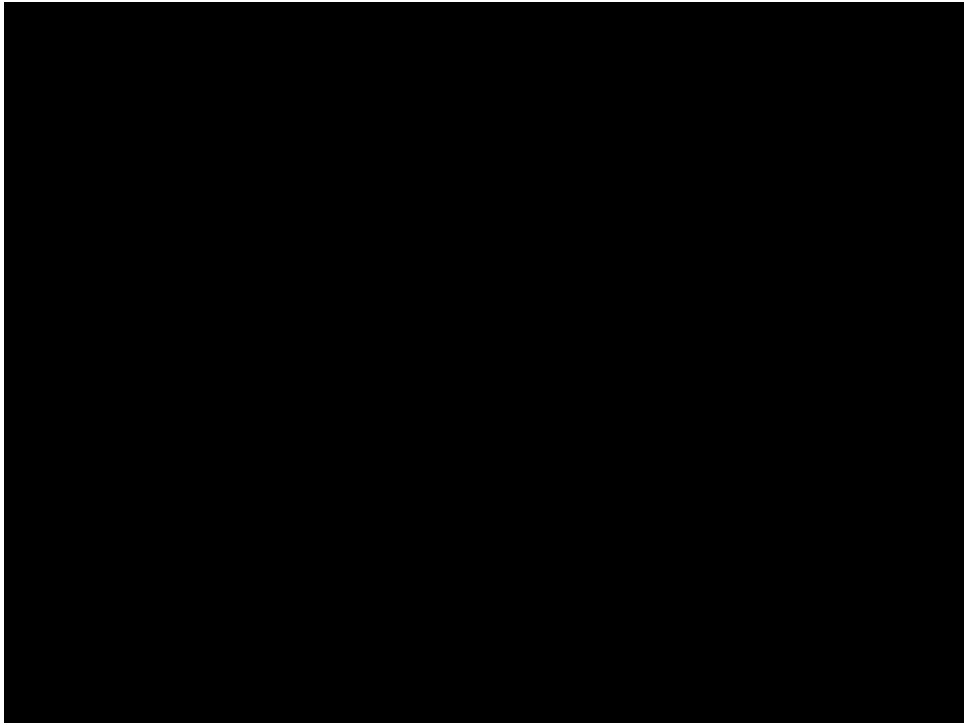


MRI Challenges

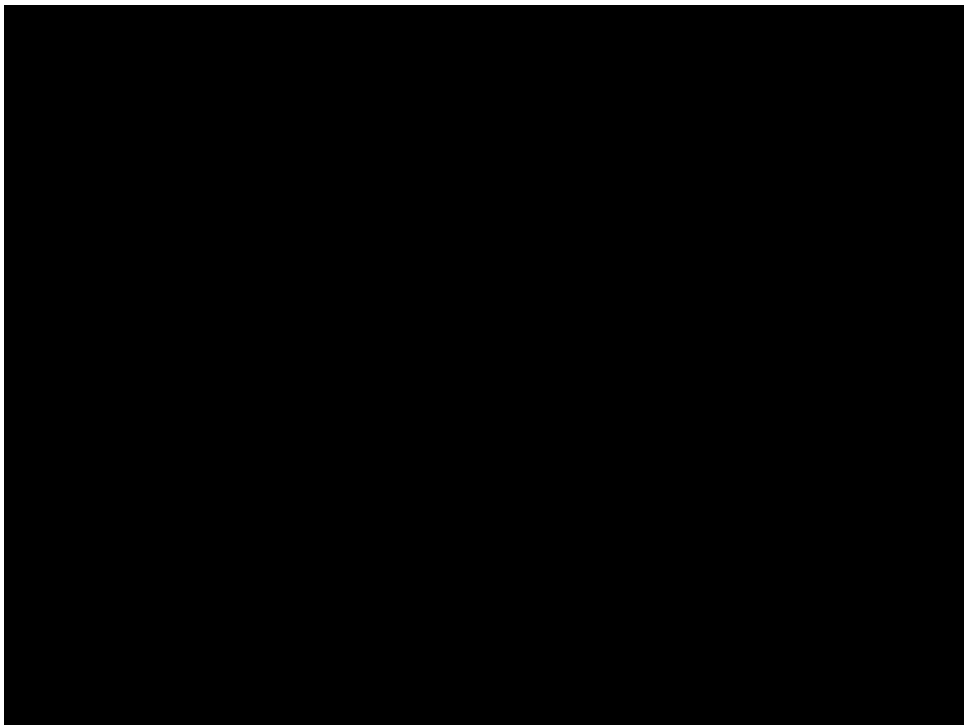


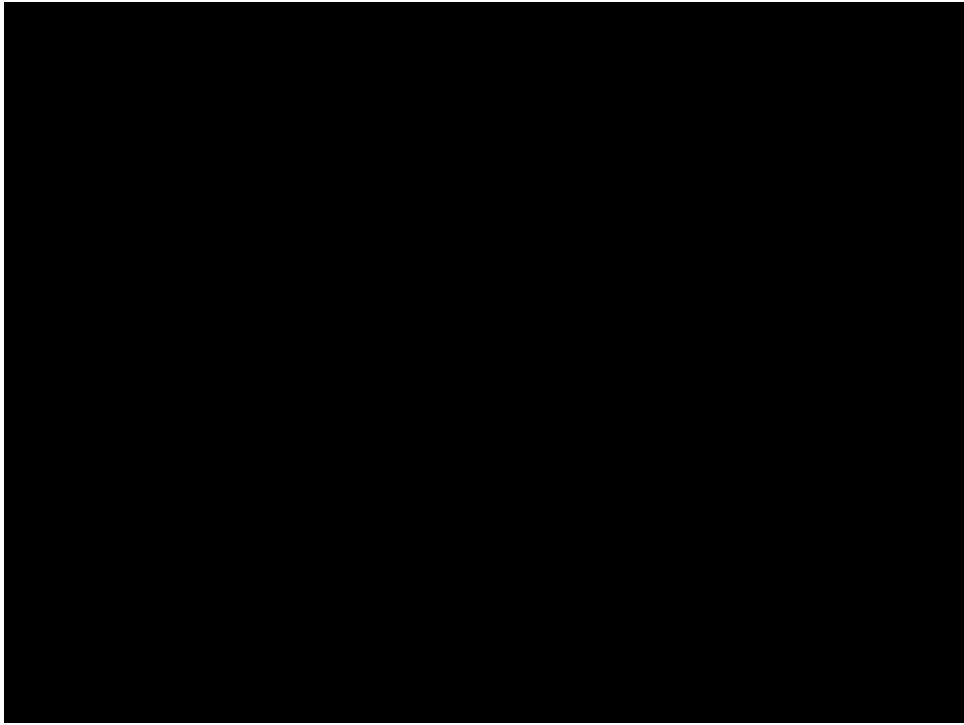
MRI Challenges (continued)



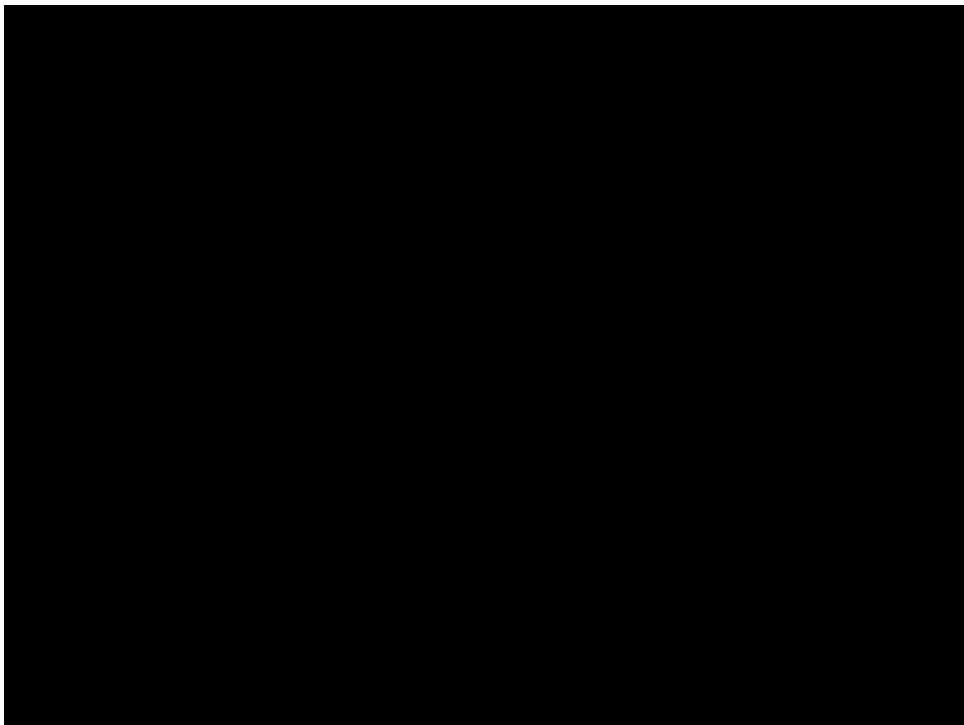


Three thin, horizontal black lines are visible, likely representing a section header or a separator line within the redacted content.





Three thin, horizontal black lines are visible, likely representing a section header or a separator line within the redacted content.





Horizontal lines representing text that is partially obscured by the redaction.

A series of horizontal lines representing text that is fully visible below the redaction.